

Scroll & Pen

Pi Theta Epsilon

National Honor Society of Occupational Therapy

A program of the American Occupational Therapy Foundation



Fall 2021 | Volume 32, Issue 1

Letter from the President



Dear Pi Theta Epsilon,

Happy Fall Semester! How is it September already?!

Once again, some of you may have returned to campus while many of you have returned to your home office creations to attend your courses virtually. Labs and lectures continue to likely not represent what you may have imagined; and for some of you, it likely is not how you also expected your last year in school to begin. Nonetheless, in another year of the pandemic, you all are being forced to hopefully make the best of it.

Since May, we have again spent our time strategizing the next year as we continue to adapt and innovate within this hybrid environment. We have reviewed our initiatives, our awards and scholarships, and our programs to ensure we are developing sustainable alternatives until life returns to what we know as “normal”.

In May's *Scroll & Pen*, we mentioned that we were hoping to co-host (with AOTF) a *How to Become a Researcher* panel in October or November, pending the schedules of our panelists. Unfortunately, it does not appear it will air this season. However, we are continuing to plan for it at the upcoming AOTA Annual Conference, whether in-person or virtually.

We will be bringing back the PTE Beginners' Orientation for its 3rd annual virtual session later this season – please read below for more information.

PTE has renewed its partnership with OT.com for the 5th consecutive year to offer our lifetime members with three free continuing education courses this year. Thank you to the 225+ responses we received for our course survey. Continue reading below to see which three courses will be offered during the 2021-2022 fiscal year, along with dates and timelines to register!

PTE began a new initiative this year with our one-page monthly newsletter that comes to your inbox ~15th of each month. A formal survey was sent out this summer to evaluate the effectiveness and perception of this newly added communication channel. Some results of the survey were reviewed in the September monthly newsletter. If you are not receiving these and would like to be included, please reach out to pte@aotf.org to ensure you are on the mailing list.

As always, we encourage you to reach out to National Office to voice your questions, concerns, comments, and ideas. Thank you all for your continued support of Pi Theta Epsilon. I

hope to see many of you soon in our virtual events!

Sincerely,

Pooja A. Patel, DrOT, OTR/L, CDP

Pooja A. Patel, DrOT, OTR/L, CDP

National President of Pi Theta Epsilon

Occupational Therapist

Certified Dementia Practitioner

PTE's Commitment to Diversity & Inclusion

In this current climate, we have heard many concerns and feedback from faculty regarding PTE's role in addressing disparities within the occupational therapy community. We understand that our eligibility criteria and membership requirements are not perfect. We understand that our students across the nation have risen from many different walks of life and have various arrays of responsibilities outside of their graduate school programs. We want our membership and faculty advisors to know that we are listening to you, we are processing all of the needs, and we are working together with AOTF to identify possible solutions and/or changes that we may need to consider. We ask for your patience and understanding as we navigate this critical initiative and potential changes. We will do our best to communicate any future efforts as able.

-Pooja Patel, PTE President, DrOT, OTR/L, CDP

OT.com Courses Being Offered For Free To Our Lifetime Members

The following three courses will be offered three times a year with the first starting today, September 24 - October 8. The second course should be available in January and the third course in May. If you have not already signed up for the first course, please RSVP to pte@aotf.org. The three courses being offered in this order are:

- *Is it Sensory or Behavior? Understanding Challenging Behavior - 9/23 - 10/8/2021*
- *Fun, Practical, Client-Centered Activities to Encourage Social Emotional Development in Pediatric Practice*
- *Nonpharmacological Pain Management Strategies: A Lifestyle Redesign Approach*

3rd Annual Beginner's Orientation

Are you a new faculty advisor, chapter president, or member that wants to know more about PTE? Join us virtually for an evening with members of the PTE national board. During this event, we will discuss:

- Member Benefits
- Chapter Logistics
- Resources
- Event Planning
- Fundraising
- Q&A

Last year we truly enjoyed connecting with our members and addressing common questions and concerns. We look forward to this meeting to promote collaboration and PTE engagement!

More details on date and time to come soon!

Quarterly Research Hour

We are starting our new initiative in 2022! We will be holding a virtual research hour that will include 2-

3 presenters with time for Q&A. The virtual research hour will be held on February 16th, May 18th, August 17th, and November 16th. Each date will include different presenters, including full time academic researchers, student doctoral capstones or master's thesis, AOTF researchers, and clinical practice researchers. Look out for a link to express interest in presenting!

2021-2022 St. Catherine Challenge

AOTF 2022
ST. CATHERINE
CHALLENGE



Raise Funds for OT Research:
Create a School Team

Join Now!

On Thursday, September 23rd, the St. Catherine's Challenge held a Strategic Zoom meeting regarding the 2021-2022 St. Catherine's Challenge. There were several people on the call, but if you were unable to make it, here is the [SCC PowerPoint Presentation](#). We are asking all schools that want to participate, to send in the [2021-2022 Pledge Form](#).

The St. Catherine's Challenge is a student led fundraising event where OT programs across the country compete to raise money for the AOTF Intervention Research Grant, a unique seed-funding opportunity for OT researchers to obtain funding for early-stage research studies. The IRG program has been a great success over the last 8 years and the St. Kate's Challenge has been instrumental in that success. Our 2021/22 goal is to have 65 schools participate in the competition and raise at least \$65,000. This would fully fund One (1) Intervention Research Grant (IRG) in 2022 and it would be a St. Catherine's Challenge record. Last year 50 PTE schools raised almost \$45,000 for occupational therapy research! This fully funded IRG for the 2021 cycle is a great demonstration of the OT community's support for research in areas of critical need to the profession. University of Pittsburgh won the challenge raising just over \$5,400.00. Washington University in St. Louis was a close second and had 100% program faculty participation. Third place went to New York University.

2021-2022 Election Cycle

It's already election season again here at PTE! This year's election cycle will be for the roles of National President and National Secretary. Please review the roles and responsibilities below. If you are interested in running for national office, please submit a [nomination form](#) by **November 1st**. Submitted nomination bios will be disseminated via direct email, social media, and the November monthly newsletter. Elections will run from December 1st through January 31st, coinciding with the deadline for most of our awards. Elected members will be informed the first week of February with biographies printed in the February monthly newsletter. The elected members will then join the executive board meetings for March & April to assist with a smooth transition at Annual Conference. As a reminder, "Each chapter holds one vote. Each lifetime member or alumni member in good standing, once they have graduated from their respective Occupational Therapy Program, carries half a vote." Please reach out with any questions.

National President

The President shall preside over all meetings, sessions at the Annual AOTA Conference, and the Annual Business Meeting, as well as promote the functioning of the organization.

Eligibility: Candidates for President must have been active members of PTE for a minimum of two years prior to taking office at the PTE Annual Business Meeting.

General responsibilities:

- Organize/run faculty advisor workshop
- Organize/run Annual Business Meeting
- Set the agenda and convene PTE Executive Committee conference calls
- Serve as PTE Representative to AOTF Board of Directors
- Oversee special events; delegate responsibilities as needed

Mandatory duties:

- Attend AOTA conference
- Submit Scroll & Pen assignments on time

Optional duties:

- Assist with AOTF events at Conference”

National Secretary

The Secretary shall record the proceedings of all meetings and distribute to the Executive Committee in a timely manner.

Mandatory duties:

- Attend all PTE Executive Committee conference calls and keep minutes
- Attend AOTA conference
- In conjunction with National Office staff, coordinate material for Scroll and Pen
- Social Media Management

Optional duties:

- Assist with AOTF events at Conference

ADVERTISEMENT

Reach your OT Career Goals

Earn a transitional Doctor of Occupational Therapy (tOTD) degree from Marymount University. You have 24/7 online access to your lessons, assignments, forums and more when you are ready, from virtually anywhere. And all for \$14,500. Apply for Fall 2021 today.

Marymount.Rehabessentials.com

A tOTD Designed for Your Busy Life & Budget.

MARYMOUNT UNIVERSITY
powered by Rehab Essentials

AWARDS

The Martha J. Kirkland Endowed Scholarship

Awarded each year through the AOTF scholarships, PTE membership is required for the MJK scholarship for a student demonstrates leadership in education, practice, and research in OT.

The Mary J. Bridle First Research Award

PTE sponsors the Mary J. Bridle First Research Award to encourage students to become actively involved in OT research. New graduates are also eligible to apply. This year's deadline has passed, but make sure to check back next year.

The President's Award

PTE chapters who organize and implement outstanding scholarly activities are eligible to apply for this award. Deadline is every January.

The PTE Grant For Excellence In Interchapter Collaboration

PTE chapters who work together to increase knowledge, develop professional skills, and contribute to the advancement of the occupational therapy profession are encourage to apply for this award. Deadline is every January.

PTE University & College Updates

Want to share your PTE chapter's news? We are streamlining the process of sharing Pi Theta news! You can submit videos, pictures, or articles to be featured on social media, YouTube, or Scroll and Pen. [Submit your content here!](#)

Keuka College



Our newest inductees from the Alpha Sigma chapter of PTE at Keuka College. Pictured are the 2020-2021 PTE members and the 2021 new inductees. Also pictured are PTE Advisors Dr. Sunny Winstead and Dr. Kristen Bacon.

East Carolina University



Our chapter of PTE participates in the Adopt a Highway Cleanup quarterly. This has been a great service opportunity for all of our members and helps to contribute to the community by helping to maintain clean and beautiful roadsides. We have a 2-mile-long section of road in Greenville, NC that we are responsible for improving.

University of New England



The University of New England's (UNE) Chapter of Pi Theta Epsilon recently organized a fundraiser to support the St. Catherine Challenge. Members organized The Nancy MacRae Meaningful Occupations Auction, which is an annual tradition for the school. PTE members gathered auction items from the UNE and greater Portland, Maine community. All baskets correlated with the meaningful occupations of those who put them together. The auction included baskets consisting of themes such as morning routines, relaxation, exercise, camping, reading, and much more. The hybrid on-campus and virtual auction was held for 3 days at the end of July, and the PTE members were able to raise over \$600 for the St. Catherine Challenge.

UNE's PTE aspires to continue the tradition of The Nancy MacRae Meaningful Occupations Auction for years to come in order to support important occupational therapy research!

University of Texas Medical Branch



July was a busy month for the Nu Chapter at The University of Texas Medical Branch at Galveston. We welcomed 12 new members from the OTD class of 2023 and elected new chapter officers. That same month, our OTD class of 2022 members presented their scholarly projects, and one of the groups was honored to have their work published in the *Journal of Hand Therapy*. We also hosted a donation drive for Moody Early Childhood Center, a local learning center that provides a safe learning environment for all children, no matter their income. Nu chapter has great things planned for the upcoming semester.

University of Texas at El Paso



The Pi Theta Epsilon-Alpha Chi chapter at The University of Texas in El Paso had an exciting summer semester that included in-person classes and the group's first in-person meeting. A highlight of the summer was coordinating a community service project with our Faculty Advisor Dr. Fierro and a local Boy Scout troop. One of the many ideas our chapter had included being able to engage with the community again. With the COVID pandemic, there was little to no opportunities for community engagement or service. The Boy Scout Troop 86 provided us with an opportunity to refurbish a patio at a local elementary school. The patio is a space that students use to sit, read, and see the flowers in the flower beds. Unfortunately, many of the flowers had dried up, the paint on the flowers beds had chipped, and the benches rotted to the point that they were unsafe for students to utilize. As future OTs, we know that having a space for the students to return to when the schools opened was meeting the occupations of leisure, play, and social participation. We were excited to be able to make a difference in the student's

school environment by providing items such as a mandala wind spinner and wind chimes to provide a

California State University, Dominguez Hills



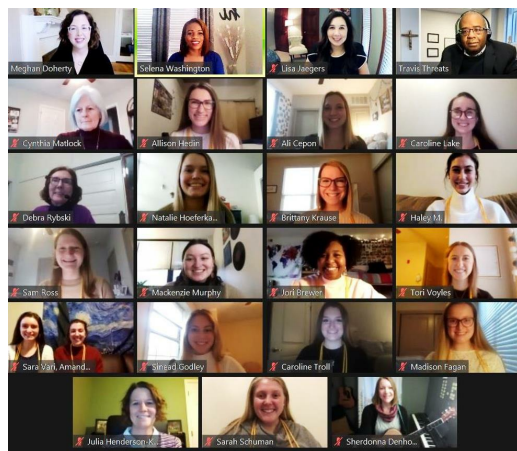
We recently conducted our first event of the semester titled 'C16 & C17 Summer Social'. Our MSOT program encourages cohorts to join a mentorship program to ease the transition for new students. As our C16 mentors are currently preparing to begin Level II Fieldwork, the Summer Social event invited both cohorts to come together for various activities (arts & crafts, yoga, dinner party) and end with C17 mentees giving a sweet send off/thank you to their mentors.

Western New England University

The Epsilon Omega PTE chapter at WNE completed a virtual service project over the summer.

Occupational Therapy doctoral students in the Epsilon Omega chapter of the PTE Honor Society from Western New England University in Springfield, MA created a mental health toolkit to promote mental health and wellness for the high school population. This online toolkit entails a collection of activities, tools, and videos used as a reference guide for persons looking to improve or maintain their mental health. This online toolkit dives into emotional intelligence, creativity and expression, sleep, mindfulness, journaling, and physical fitness. Each header on the site provides videos, tools, or activities related to these topics. The purpose of this toolkit is to help high school students achieve the highest quality of life and improve their overall performance in school and extracurricular activities by encouraging students to incorporate these activities and tools into their daily routines. Check out the [ToolKit](#).

St. Louis University



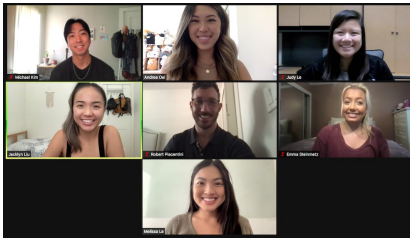
Saint Louis University's PTE chapter partnered with St. Louis' TRIO Educational Talent Search to teach middle/high school students about the field of occupational therapy. TRIO, a federally funded program, encourages and assists school aged children who are first generation and/ or from low area income families to pursue a further education. SLU's PTE members, along with Dr. Washington, explained what OT is and led the students in a fine motor activity which explored socioemotional wellbeing. [Trio Education](#)

Saint Louis University and Washington University in St. Louis' PTE chapters collaborated to co-host a panel consisting of alumni. The goal of the panel was to educate and prepare PTE members for their upcoming Level 2 Fieldwork.

Stanbridge University

As many universities continue to utilize remote learning in response to the COVID-19 pandemic, the Delta Psi Chapter at Stanbridge University has found

ways to adapt and create events that promote safety and follow social distancing guidelines. In June, PTE held a ribbon lei fundraiser to celebrate the achievements of our classmates, friends, and family members who graduated during the pandemic. Each ribbon lei was handmade and distributed by PTE members, and a portion of the proceeds will be donated to the AOTF St. Catherine Challenge to support occupational therapy research.



Additionally, Stanbridge PTE members have continued to advocate for the advancement of the occupational therapy profession by holding roundtable discussions about cultural humility and the importance of advocacy. During our discussions, we emphasized the significance of recognizing power dynamics in healthcare, and shared how we can promote active learning by asking questions and recognizing our own cultural biases when working with clients and other health care providers. Furthermore,

we discussed how gender identity may directly impact occupational engagement for clients, and how occupational therapists can advocate for occupational justice by addressing the health disparities faced by members of the LGBTQIA+ community.

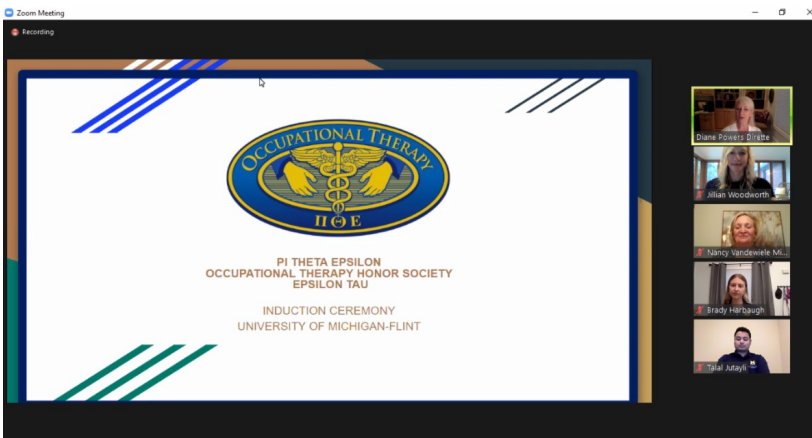
In September, Stanbridge PTE began their new “Occupational Therapy Advocacy Series” on social media to promote awareness and advocacy for the field of occupational therapy. The series focuses on advocacy for both our clients and our profession, and we are committed to using our platform to spread knowledge about the value of occupational therapy services. Our first post features multiple PTE members and highlights how they advocate for occupational therapy, and how we can all progressively become better advocates. For example, our members have become conscious of using the term “occupational therapy” rather than the abbreviated “OT” to emphasize the full name of our profession when speaking to others who may not be familiar with the occupational therapy field.

CALL TO ACTION

We are using our platform to start an “Occupational Therapy Advocacy Series” to address the gap between occupational therapists and the rest of the healthcare field. Our hope with this series is to spread knowledge about the value of occupational therapy services and to encourage others to have an active role in advocating for our profession. This series is for the clients who may benefit from occupational therapy services, but don't know who we are and how we can support them in achieving their goals.

PI THETA EPSILON DELTA PSI

University of Michigan-Flint



University of Michigan-Flint inducted the 2nd cohort of PTE Members for the Pi Theta Epsilon-Epsilon Tau Chapter. The ceremony with the keynote address by Diane Drette, a candle lighting ceremony, and pledge with faculty, friends, family, and fellow students present.

University of North Dakota

The Pi Theta Epsilon (PTE) Kappa Chapter at the University of North Dakota (UND) has kicked off a new fall



semester in full gear. Students have returned to in-person classes but have continued to take advantage of holding PTE events via Zoom due to university policies in place.

Highlights of this new semester include the following:

- Held a fall induction at the University of North Dakota Campus, School of Medicine and Health Sciences in Grand Forks, ND.
- Inducted 1 new member into the Kappa chapter, Jennavive Holm, on September 23, 2021. Welcome Jennavive!
- Hosted a virtual roundtable discussion on a current, scholarly article, focusing on COVID impacts within the Occupational Therapy profession in Grand Forks, ND.
- Students, faculty, and other attendees were split into small breakout groups to discuss and collaborate on key components of the article, methodology, application to practice, and any additional questions specific to the content of the article, prior to discussing as a large group.
- Continue to collaborate in the planning a variety of in-service and learning opportunities for the upcoming semester.

The organization continues to adapt well to the virtual environment for meetings and roundtables and is looking forward to another successful semester of promoting continued education and furthering the development of professionalism in students.

[PTE Store](#)

[Scroll & Pen Archived Issues](#)

American Occupational Therapy Foundation | PTE
aotf.org | pte@aotf.org

