

Building Evidence to Improve
Practice & Health[®]



Dear Friends and Partners,



Over the past year, I have had the privilege of representing AOTF and engaging with individuals and collective audiences across a wide array of contexts. These occasions have deepened my appreciation for the impactful work of the people and communities that constitute AOTF. I am writing today to share my gratitude and thanks, reflections on our community, and visions of possible futures.

AOTF could be described through the structured groups within the organization including staff, volunteer committees, recipients of AOTF grants and scholarships, donors and supporters, and the Academy of Research. Each of these entities performs critical functions. However, this descriptive categorization does little to illuminate the multiplicity of ways in which people commit their talents, time, and expertise to support the Foundation. AOTF is people driven and like most organic communities, relies on the interpersonal relationships that optimize development. Our community has been sustained by an impressive number of colleagues who have personal, enduring investments in our mission and work. For some of you, your relationships with AOTF and the broader occupational therapy community resonate with the depth of connection captured in such phrases as “it is like family.” Such connections require care and attention. We are committed to enhancing our engagements with members of our community and welcoming additional participants. We are very appreciative of how many of you have responded, resulting in new engagements, sometimes re-engagements, and a strengthening of our numbers and networks.

Communities must be nurtured and evolve through social learning and the enactment of practices that support growth, mattering, sustainability, and relationships. Relationships also include the situatedness of AOTF within other related communities such as the broader occupational therapy community, stakeholder groups and organizations, public policy arenas, and interdisciplinary research networks. In the evolving arena of health care, these partnerships and associations with other communities become increasingly salient and provide opportunities to maximize impact.

Membership in communities is identity shaping and is often accompanied by increased perceptions of belonging and participating. As we chart the future course of AOTF, we seek to learn more about how to best enhance our engagements with you and solidify your identity as a member of the AOTF community. We solicit your suggestions and inputs. The use of the pronoun “we” in this letter is deliberate.

As articulated in this Annual Report, 2018 has been a very successful and productive year. So congratulations and deep appreciation to all of you for your efforts and contributions. Our future is dependent on the continued collective endeavors of the AOTF community. I look forward to working with all of you as we enact the “next” next steps for AOTF.

Sincerely,

Mary C. Lawlor, ScD, OTR/L, FAOTA
Chair, AOTF Board of Trustees



Your generous gift helps me both fund this education and pursue professional goals which include research and practice with the Alaska Native population...I look forward to my career as an OT – contributing to the profession’s body of evidence and to my local community.

*Erin Kuester, Creighton University
2017 Mary Fiorentino Memorial
Scholarship winner*

Family and Community: The Ties That Bind

In our 2017 Annual Report, we highlighted mentors as an essential part of the occupational therapy research enterprise. Our intent was to make the point that we fund research, but in doing so, we, just as importantly, invest in people. Of course, OT research, and more broadly the OT profession, involves a much larger group of people.



Merriam-Webster defines community as:

A unified body of individuals, i.e. people with common interests living in a particular area; a group of people with common characteristic or interest living together within a larger society; **a body of persons of common and especially professional interests scattered through a larger society**; a body of persons or nations having a common history or common social, economic and political interests; a group linked by common policy.

Merriam-Webster defines family as:


The basic unit in society traditionally of two parents rearing their children; a group of individuals living under one roof and usually under one head; a group of persons of common ancestry; **a group of people united by certain convictions or a common affiliation**; a group of things related by common characteristics.

I would assert that OT researchers and practitioners are not only a community, but perhaps more essentially, a family.

Our 2017 Annual Report's cover image was that of a stylized family tree. We use that image again with intent throughout this year's Report. In this day and age, where it seems that policy and politics take precedence over family and community, I hope that occupational therapy continues to champion the value of family and community and of their critical role in binding society together. I can think of no better profession to do so. The AOTF is proud to be a part of the OT family.

A handwritten signature in black ink, appearing to read 'Scott Campbell'.


Scott Campbell, PhD
CEO



[Mentors] taught me the value and the sustaining power of the love of learning, to strive for excellence in all we do, to never compromise my integrity, and to always prioritize the overall goal of improving the outcome of the patients that we serve. They also modeled our responsibility to give back to the systems that support us, including supporting the development of students and junior researchers.

*Bernadette Nedelec, PhD, BScOT(C)
2018 Academy of Research Inductee*

AOTF Planning Grant Collective: Identifying Areas of Research Opportunity



My mentors provided me with numerous opportunities that challenged me to step out of my comfort zone and provided me with constructive feedback along the way... Key advice that has served me well was to collaborate and share resources with colleagues across disciplines and to seek out multiple funding sources especially when starting out.

*Gary Bedell, PhD, OTR/L, FAOTA
2016 Academy of Research Inductee*

The second AOTF Planning Grant Collective, *Catalyzing Research to Optimize Participation in Work & Life Roles of Cancer Survivors*, was held March 4-6, 2018. A wide range of disciplines was represented as well as several funding agencies (NCI, ACS, NCMRR) were present, both as a way to identify potential funding opportunities and as a way to educate the agencies about the focus of occupational therapy on the topic.

Priority areas in which new lines of research regarding participation in cancer survivors are needed included: screening and triage for participation restrictions, self-management approaches to foster participation, and work and employment issues. A white paper of the meeting proceedings has been submitted to *OTJR: Occupation, Participation and Health*.

The Foundation plans to convene one Collective a year and plans are well underway for 2019 on the topic of aging in place. We believe this multidisciplinary team approach will result in much-needed new research in areas of great interest and opportunity for the OT profession.



Participants in the 2018 Planning Grant Collective.



AOTF IRG Program Remains the Cornerstone of Research Portfolio

In 2018, we reached the sixth year of continuous funding for our Intervention Research Grant (IRG) program. With the five new IRG grants awarded in 2018, we have now supported a total of 25 IRG grants and have reached \$1.25 million in funding for the program. The Foundation's niche is support of early career investigators and development of preliminary proof-of-concept research data to support the advancement of novel research ideas. Our investment in people and their research is starting to be impactful, with publications in quality journals, grant application submissions and grants funded, and career advancement for our recipients.

The IRG program would not be possible without the support of the American Occupational Therapy Association (AOTA) and the National Board for Certification in Occupational Therapy (NBCOT). And a big thank you to the hundreds of students at the 44 schools that supported the IRG program through the 2018 St. Catherine Challenge.

Also in 2018, we announced a new Health Services Research (HSR) Grant program. The HSR's focus on patient safety, effectiveness of evidence-based care, efficiency of patient-centered care, timeliness in obtaining care, and equity of care make occupational therapy a perfect profession for conducting pilot studies that will advance the delivery, quality and impact of OT. This new program is timely considering the expectations of payers and policy makers to prove not only cost effectiveness of healthcare, but quality of services provided to patients/clients. We thank NBCOT for providing the funding to initiate and sustain this program for the next three years.



Drs. Lauren Little, Anne Kirby, Rachel Proffitt, Susan Fasoli, winners of the 2018 IRG, celebrated at the AOTF VIP reception.

2018 IRG RECIPIENTS

Angela Caldwell, PhD, OTR/L, CLT

University of Pittsburgh
Partnering for Prevention: Promoting Healthy Habits in Underserved Communities
Mentor: Roxanna Bendixen, PhD, OTR/L.

Susan Fasoli, ScD, MS, OTR/L
MGH Institute of Health Professions

A Paradigm Shift: Rehabilitation Robotics, Cognitive Skills Training and Function
Mentor: Teresa Jacobson Kimberly, PhD, PT.

Anne Kirby, PhD, OTR/L
University of Utah

Pilot Study of the MAPSS (Maximizing Adolescent Post-Secondary Success) Intervention
Mentor: Himle Michael, PhD.

Lauren Little, PhD, OTR/L
Rush University

Bridging a Service Gap in Autism: A Hybrid Education-Coaching Intervention
Mentor: Winifred Dunn, PhD, OTR/L, FAOTA.

Rachel Proffitt, OTD, OTR/L
University of Missouri

Feasibility of the Lee Silverman Voice Treatment(R)-BIG Intervention in Stroke
Mentor: Timothy Wolf, OTD, PhD, OTR/L, FAOTA.

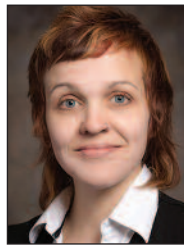


Nedra Gillette Endowed Research Fellowship Awarded to Amber Angell



I just began a new position as research assistant professor at the University of Florida under a K12 award through the Research Rehabilitation Career Development program (Ken Ottenbacher is the PI). Dr. Sherrilene Classen is my mentor, and I'm thrilled to have such an incredible opportunity. Having funding for an independent project during my postdoc also undoubtedly helped launch me into the next phase of my career by making me a stronger candidate for the K12 program!

Amber Angell, PhD, OTR, 2018 Nedra Gillette Endowed Research Fellow



The 2018 Nedra Gillette Endowed Research Fellow was Amber Angell, PhD, OTR, of the University of Illinois at Chicago. Dr. Angell worked with a local nonprofit, Urban Autism Solutions, to increase residents' community participation and self-determination and to inform the future design of an interest-based occupational therapy intervention for a larger sample of young adults with ASD. Dr. Angell's mentors were Joy Hammel, PhD, OTR/L, FAOTA and Susan Magasi, PhD.

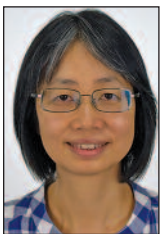
Academy of Research Inductees

Bernadette Nedelec, PhD, BScOT(C)

Dr. Nedelec is an Associate Professor and the former Director of the Occupational Therapy Program, School of Physical and Occupational Therapy at McGill University, Montréal, Québec, Canada. Her research interests focus on the rehabilitation of people who have sustained a major burn injury with a particular interest in the evaluation and treatment of hypertrophic scar. The formation of hypertrophic scar is considered one of the most important long-term consequences of



a major burn injury leading to impairments, activity limitations and participation restrictions. Research projects have evaluated the clinical instruments used to quantify hypertrophic scar and its associated symptoms, the efficacy of treatment interventions employed to minimize hypertrophic scar and its associated sequelae, practice issues related to evidence-informed practice, ensuring burn therapist competency, and the delivery of best practice rehabilitation, as well as the comprehensive evaluation of the short- and long-term outcomes associated with burn injuries.



Ching-yi Wu, ScD, OTR

Dr. Wu is a full professor in the Department of Occupational Therapy and the Graduate Institute of Behavioral Science in the College of Medicine at Chang Gung University in Taoyuan City, Taiwan with a practice appointment as Adjunct Occupational Therapist in Chang Gung University Hospital. Dr. Wu's research interest mainly lies in neurorehabilitation after stroke and the application of motor control study in stroke rehabilitation, together with examining the psychometric and clinimetric properties of outcome evaluations used in efficacy study. She has combined electrophysiological stimulation with task-oriented approaches; for example, transcranial direct current stimulation combined with mirror therapy for facilitating neural reorganization and motor recovery. Dr. Wu's research has used kinematic analysis and functional magnetic resonance imaging to study the nature of improved movement control and the possible neural mechanisms underlying improvement. Dr. Wu is the Principle Investigator of the Human-Machine Interface in the Healthy Aging Center at Chang Gung University which facilitates the application of technology in rehabilitation and occupational therapy practice.



AOTF Thanks Its 2018 Event Sponsors

VIP RECEPTION



National Board for Certification in Occupational Therapy

BREAKFAST WITH A SCHOLAR

FOUNDER LEVEL



Encompass Health

OCCUPATIONALTHERAPY.COM

BENEFACTOR LEVEL

USC Chan Division of Occupational Science and Occupational Therapy

PATRON LEVEL



PARTNER LEVEL

Boston University
Colorado State University
Columbia University
Florida International University
New York University
Nova Southeastern University
RESNA – Accent Care
Thomas Jefferson University
Touro University – Nevada
University of Kansas Medical Center
University of Missouri
University of Pittsburgh
University of Wisconsin – Madison
Washington University in St. Louis

FRIENDS:

KRISTINE HAERTL, PhD, OTR/L, FAOTA

STATE OF THE SCIENCE

VANGUARD LEVEL



USC Chan Division of Occupational Science and Occupational Therapy



OCCUPATIONALTHERAPY.COM

TEXAS WOMAN'S UNIVERSITY

PATHFINDER LEVEL



DISCOVERER LEVEL

BOSTON UNIVERSITY

EXPLORER LEVEL

UNIVERSITY OF MISSOURI

Special Thank You to OCCUPATIONALTHERAPY.COM



AOTF's Events at the 2018 AOTA A

AOTF's VIP reception honored our major donors, conference sponsors, volunteers, and leadership. Kathleen Lyons, ScD, OTR/L, a 2017 Intervention Research Grant recipient and Chair of the 2018 AOTF Planning Grant Collective on cancer survivors, provided a "mission moment". Dr. Lyons shared her thoughts on the impact of AOTF research funding on her career and her recent participation in the Collective. A celebration of Fred Sammon's 90th birthday complete with a birthday cake capped off the evening.



Annual Conference, Salt Lake City



The Breakfast with a Scholar featured poet Molly McCully Brown. Ms. Brown read selections from her prizewinning collection of poems, *The Virginia State Colony for Epileptics and Feeble-minded* and spoke eloquently about the impact of the words we choose when speaking about disability. A full house gave Ms. Brown a standing ovation. **The State of the Science Symposium** topic was Functional Cognition: The OT Lens on Occupational Performance. Carolyn Baum, PhD, OTR/L, FAOTA moderated the panel and introduced the topic. Symposium speakers included Deirdre R. Dawson, PhD, OT Reg. (Ont.), Robin Newman, OTD, OTR/L, CLT, CDRS, Juleen Rodakowski, OTD, MS, OTR/L, and Timothy J. Wolf, OTD, PhD, OTR/L, FAOTA.



St. Catherine Challenge: Students Supporting OT Research

2018 was another successful year for the St. Catherine Challenge with 44 schools raising over \$44,000 to support AOTF Intervention Research Grants. This student-led fundraising initiative engages emerging occupational therapists with the mission of AOTF and helps provide seed funding for early OT research. We are so proud of the creativity, dedication, and enthusiasm our participating schools demonstrated this year – raising the most money in the Challenge’s history!

Thank you to all the schools who participated in the 2018 Challenge. We look forward to an even greater 2019 Challenge. We encourage all OT programs and all alumni of participating schools to support this important philanthropic initiative.



The IRG provided me with an opportunity to frame my research with a strong occupational therapy underpinning.... because the IRG emphasizes collaborative work, I was able to initiate a collaboration with a cognitive neuroscientist who brought an entirely new perspective to my work. AOTF IRG funding is vital for the occupational therapy profession to allow researchers to explore novel research from an occupational therapy perspective and to spur collaborations with researchers in other professions who are unaware of the integral role that occupational therapists bring to rehabilitation research.

*Simone V. Gill, PhD, OTR, 2015
Intervention Research Grant Recipient*

DIAMOND LEVEL \$7,500+

Columbia University
Rush University

PLATINUM LEVEL \$5,000-\$7,499

San Jose State University

GOLD LEVEL \$2,500-\$4,999

Misericordia University
Saint Catherine University
University of Pittsburgh

SILVER LEVEL \$1,000-\$2,499

Texas Woman’s University
University of North Dakota
Washington University in
St. Louis

BRONZE LEVEL \$500-\$999

Boston University
Medical University of
South Carolina
New York University
Sacred Heart University
University of Mary
University of New England
University of North Carolina
at Chapel Hill
University of Scranton
University of Southern California
Virginia Commonwealth
University

CHALLENGE PARTICIPANTS

Brenau University
Brown Mackie College
Colorado State University
Creighton University
Indiana State University
Louisiana State University HSC -
New Orleans
MGH Institute of Health
Professions
Nova Southeastern University -
Fort Lauderdale
Rockhurst University
Saint Louis University
Salus University
Spalding University
Stony Brook University
Temple University
Texas Tech University HSC
Towson University
University of Central Arkansas
University of Findlay
University of Illinois at Chicago
University of Missouri
University of Oklahoma HSC
University of South Dakota
University of Texas Medical
Branch at Galveston
University of Tennessee HSC
University of Wisconsin -
La Crosse
West Coast University
West Virginia University



Why Give

Today, in the value-based healthcare environment in which patients, practitioners, policymakers and payers operate, the demand for evidence is paramount. By implementing the principals of evidence-based practice into occupational therapy, OTs have been able to utilize scientific research to improve client interventions, address unique and universal challenges in healthcare delivery and transform lives. The research funded by AOTF advances the science of OT to improve the quality of lives for all people, regardless of age or ability. Specifically, AOTF fulfills a critical gap in supporting early stage grants for OT research. Each year, philanthropic gifts provide the valuable resources OT investigators need to generate new evidence, enhance the quality of care, and strengthen the OT profession. Please join our community, donate, and together we will **Build Evidence to Improve Practice and Health.**

OPPORTUNITIES IN PLANNED GIVING

Florence Cromwell was an exceptional figure in occupational therapy whose leadership had a transformative impact on our profession and whose legacy will influence generations of OTs. While Florence passed away in 2016, she will continue to play an active role in the future of OT because she established an AOTF scholarship with a bequest gift. A planned gift is a wonderful way to support the future of the field and leave a lasting legacy. AOTF is extremely grateful to the generous gift by Dr. Cromwell and all our planned giving donors. Consider your impact on the future of OT research today.

SECURING THE FUTURE

The American Occupational Therapy Foundation is immensely grateful to our generous donors during the fiscal year 2018 (October 1, 2017-September 30, 2018). A more extensive list of donors is on our website www.aotf.org.

Donors \$10,000 and over

Allied Health
Media/OT.com
Florence Cromwell
Bonita Kraft
National Board for
Certification in
Occupational
Therapy
North Coast Medical,
Inc.
Kathlyn Reed

\$5,000-\$9,999

Encompass Health
Mindy Hecker
Illinois OT Association
Kappa Delta Phi
Sorority
Network For Good
Rush University
University of Southern
California

\$1,000-\$4,999

Nancy Baker
Nancy Bagatell
Belmont University
Breanna Berg
Bette Bonder
J Chris Bradberry
Patricia Booth
Boston University
Daniel Buning
Scott Campbell
Charles Christiansen
Florence Clark
Florida International
University
Ellen Cohn
Columbia University
Colorado State
University
Wendy Coster
Indiana University
Irene Frye
Genni Hester
Martha Kirkland
Mary Lawlor
Nancy Liefinck

Brittany Mascaro
Misericordia University
New York University
Nova Southeastern
University
Nancy Prendergast
Ohio State University
Lynne Richard
Susan Robertson
Sand Hill Global
Advisors
Barbara Schell
Elizabeth Skidmore
Harlan Temple
Temple University
Texas Women's
University
Thomas Jefferson
University
Touro University
Nevada
Tufts University
University of Illinois-
Chicago
University of Kansas
Medical Center
University of Pittsburgh

University of Missouri
University of New
England
University of North
Carolina
University of North
Dakota
University of Utah
University of
Wisconsin-Madison
Washington University
in St. Louis
Ruth Ann Watkins
G Gordon Williamson
Barbara Winthrop

\$500-\$999

Laura Allen
Kimberly Bryze
Donna Costa
Winifred Dunn
Judith Falconer
Kristine Haertl
Suanne Johnson
Jennifer Kaldenberg
Catherine Trombly
Latham

Nicholas Lee
Kenneth Ottenbacher
Heidi Pendleton
Sacred Heart
University
Sarah Snyder
University of Mary
University of South
Dakota
West Virginia OT
Association
Yen Tran
Maxine Zinder

\$250-\$499

Allison Blackburn
Robert Blicksilver
Brent Braveman
Azalea Candelaria
Druanne Davies
Dorothy Edwards
Khurshid Escalante
Rita Fleming-Castaldy
Andrea Fultz
Nedra Gillette
Azela Gohl-Giese

Hanna Gruen
Susan Harris
Zara Harris
Ruth Humphry
Indiana State
University
Joann Kennedy
Marcia Kielhofner
Erin Kissel
Virgil Mathiowetz
Julie Shaperman
South Dakota
Occupational
Therapy Association
Texas OT Association
University of Findlay
Linda Thomson
University of
Oklahoma
University of
Tennessee
Martha Wilcockson
Timothy Wolf
Jane Rourk
Renee Taylor
Toni Walski

The American Occupational Therapy Foundation has made every effort to provide a complete and accurate report recognizing our donors. If we have made an error, please notify us at aotf@aotf.org. Please also write us if you wish to have your name removed from receiving future fundraising requests.



2018 Scholarship Recipients

North Coast Medical Scholarship - \$5,000 each

Hannah Fifer, University of Texas, Medical Branch

Isabelle Laposha, Washington University

OccupationalTherapy.com - \$5,000 each

April Horstman, The Ohio State University

Laura Milligan, Northern Arizona University

The National Board for Certification in Occupational Therapy Endowed Scholarship - \$2,145 each

Amy Early, University of Illinois at Chicago

Ethan Fahreny, Huntington University

Tracy Tang, University of Southern California

Olivia Vega, The Ohio State University

Willard & Spackman Scholarship

Anna Richardson, University of Texas El Paso - \$2,000

Caitlin McAvoy, San Jose State University - \$2,000

Shannon McCollum, University of Texas Medical Branch - \$1,200

Julia Malinowski, Midwestern University Downers Grove - \$500

The Florence M. Stattel Endowed Scholarship - \$2,000

Jordan Powers, Nova Southeastern University-Tampa

Kappa Delta Phi Scholarship - \$1,750 each

Monica Kim, Stanbridge College

Catherine Gallagher, The Ohio State University

Carolyn Kohn Memorial Scholarship - \$1,500

Anju Thomas, University of the Sciences

Mary Fiorentino Memorial Scholarship - \$1,500

Amanda Pitts, Georgia State University

Mary Minglen Memorial Scholarship - \$1,500

Andrea Gurga, University of Illinois at Chicago

Martha Kirkland Pi Theta Epsilon Endowed Scholarship - \$1,296 each

Caitlyn Bird, Eastern Kentucky University

Rebecca Gerwe, Eastern Kentucky University

Robert and Sharon Ryan Endowed Scholarship - \$1,500

Kevin-Phi Le, Stanbridge University

The Network for Lesbian, Gay, Bisexual and Transgender Concerns in Occupational Therapy Endowed Scholarship - \$962

Chloe Pillion, St. Catherine University

AOTA Assembly of the Student Delegates (ASD) Scholarship - \$760

Sarah Baron, University of Pittsburgh

Alice Jantzen Memorial Scholarship - \$750

Marly McQuaig, University of Alabama at Birmingham

Edith Weingarten Memorial Scholarship - \$750

Alexandra Palmer, Rush University

The Linda Botten Endowed Scholarship - \$690

Katie Smith, Pacific University

The Lela Llorens Endowed Scholarship - \$600

Kerissa Accetta, University of Central Arkansas

Janice McGraw Memorial Scholarship - \$500

Marianne Shive, Winston-Salem State University

Carlotta Welles Scholarship - \$500

Christina Comley, Austin Community College

AOTF – STATE OCCUPATIONAL THERAPY ASSOCIATION SCHOLARSHIPS

The Adelaid Ryerson Smith Memorial Endowed Scholarship of the Arizona Occupational Therapy Association - \$1,000

Molly Hahn-Floyd, Northern Arizona University

Arkansas Occupational Therapy Association Florence Wood Scholarship - \$500

Grayson Owens, Arkansas State University-Jonesboro

The District of Columbia Occupational Therapy Association Endowed Scholarship - \$2,653

Inesha Shannon, Howard University

The Florida Occupational Therapy Association Myra McDaniel Endowed Scholarship - \$923

Sarah Gaies, University of Florida

The Illinois Occupational Therapy Association Endowed Scholarship - \$500

Briana Rigau, University of Illinois at Chicago

The Kansas Occupational Therapy Association Gloria Scammahorn Memorial Endowed Scholarship - \$500

Madeleine Priebe, University of Kansas

The Todd Poche Endowed Scholarship of the Louisiana Occupational Therapy Association - \$646

Haylie Fernandez, Louisiana State University Health

Sciences Center, New Orleans Campus

The Massachusetts Association for Occupational Therapy Karen Jacobs Scholarship - \$500

John Norcross, Boston University

The Fred Sammons and Barbara Rider Endowed Scholarship of the Michigan Occupational Therapy Association - \$1,540

Jenna Levine, Eastern Michigan University

The New York State Occupational Therapy Association Endowed Scholarship - \$1,000 each

Joshua Westbury, Stony Brook University

Helen Valencia, Stony Brook University

Joseph McClean, Stony Brook University

The North Carolina Occupational Therapy Association Endowed Scholarship - \$500 each

Savannah Becker, Winston-Salem State University

William Davis, Winston-Salem State University

Kathryn Williams, University of North Carolina at Chapel Hill

The Ruth Peterson Memorial Endowed Scholarship of the Kappa Chapter, Pi Theta Epsilon, University of North Dakota - \$750

Emily LaBlanc, University of North Dakota

The Ohio Occupational Therapy Association Endowed Scholarship - \$4,000

Laura Fish Rucki, The Ohio State University

continued on page 13

OTJR Increased Impact Factor and Wilma L. West Library Continues to Grow

OTJR: Occupation, Participation and Health, AOTF's peer-reviewed research journal, increased its impact factor to 1.00, a 26% increase from the previous year. This is the highest number the journal has ever achieved. This steady growth represents the hard work and meaningful contributions that the Editor-in-Chief Sherrilene Classen, PhD, MPH, OTR/L, FAOTA, FGSA, University of Florida, and thirteen Associate Editors have made over the last few years.



The Wilma L. West Library and Archive reached a milestone this year as OT SEARCH, the online public access catalog, grew to over 50,000 entries. Monographs (books) and material from over 50 journals are added on a weekly basis. In addition, the collection includes over 230 dissertations and 900 master's theses.

Pi Theta Epsilon — Supporting Excellence in Occupational Therapy



Pi Theta Epsilon, the national occupational therapy honor society, continues to advance its mission to support occupational therapy by promoting research, leadership, and scholarly activities. One hundred and twenty schools now have active chapters, with Nebraska Methodist College, Missouri State University, Arkansas State University, Gannon University in Ruskin, Florida, and Wesley College joining PTE in 2018.

The 2018 PTE Mary J. Bridle First Research Award recipient was Rylie Power, an OTD student at Virginia Commonwealth University for her study, *The Impact of Mild Traumatic Brain Injury (mTBI) on Romantic Relationships*. The award fosters scholarship and first research efforts within the OT community of students, young practitioners, and early researchers.

PTE's successful partnership with OccupationalTherapy.com to offer free continuing education credits to its alumni and lifetime members continued for a second year. During 2018, three courses were offered: Evidence-based Intervention for Balance & Falls Prevention, Creating the Evidence in Clinical Practice: Case Study and Single Subject Research, and Seating for Special Populations: Pediatric, Geriatric, Bariatric, and Degenerative.

2018 SCHOLARSHIP RECIPIENTS CONTINUED FROM PAGE 12

The Oklahoma Occupational Therapy Association Endowed Scholarship

Kate-Lynn Duethman, University of Oklahoma at Schusterman Health Sciences Center - \$1,000

Hannah Blanden, University of Oklahoma Schusterman Health Sciences Center - \$430

The Occupational Therapy Association of Oregon Endowed Scholarship - \$500

Kylie McDermott, Pacific University

The Harlan and Rita Temple South Dakota Occupational Therapy - \$1,098

Kenna Wieczorek, University of South Dakota

The Texas Occupational Therapy Association Endowed Scholarship

Emily Guberman, Texas Tech University Health Sciences Center - \$1,887

Michele Holman, Austin Community College - \$1,500

Utah Occupational Therapy Association Endowed Scholarship - \$1,000

Jenna Euteneier, University of Utah

The Fred Sammons Endowed Scholarship of the Virginia Occupational Therapy Association - \$1,542

Justyn Roark, Virginia Commonwealth University

The West Virginia Occupational Therapy Association Charlotte Prudich, Elizabeth B. Devereaux, and Deborah Shamblin Endowed Scholarship - 1,000 each

Whitney Chafin, West Virginia University

Rachel Gaughenbaugh, West Virginia University



AOTF Board of Trustees and Staff Members

As of March 1, 2019

EXECUTIVE COMMITTEE

Mary C. Lawlor, Chair
Los Angeles, California

Elizabeth Francis-Connolly,
Vice Chair
Portland, Maine

Kristie P. Koenig, Secretary
New York, New York

Cheryl Miller-Scott, Treasurer
Sunrise, Florida

TRUSTEES

Tara C. Alexander
Dallas, Texas

Nancy Baker
Medford, Massachusetts

Felicia M. Chew
Mount Royal, New Jersey

Susan Garber
Las Vegas, Nevada

Simone V. Gill
Boston, Massachusetts

Roger I. Ideishi
Philadelphia, Pennsylvania

Mary Jane Mulcahey
Philadelphia, Pennsylvania

Forrest Pendleton
Palo Alto, California

Susan Stark
St. Louis, Missouri

Cheryl Strickland
Bridgeton, Missouri

NON-VOTING MEMBERS

Scott E. Campbell, AOTF CEO

Amy J. Lamb, AOTA President

Pooja A. Patel, PTE President

Debra Young, AOTA Vice
President

HONORARY LIFE MEMBERS

Nancy Snyder Liefinck

Jane Davis Rourk

Frederic Sammons

STAFF MEMBERS

Scott E. Campbell
Chief Executive Officer

Natasha Bragg
Member and Program
Coordinator

Carol Bradwell
Library Cataloguer

Jeanne Cooper
Chief Operating Officer

Gabrielle Garcon
Executive Assistant

Mindy Hecker
Director of Information Resources
& Wilma L. West Library

Lawrence Liff
Chief Development Officer

David Robertson
Office Assistant

Helene Ross
Communications Associate

AOTF THANKS THE MEMBERS OF ITS 2018 COMMITTEES

Audit Committee

Patricia Booth, Chair

Tara C. Alexander

Mary C. Evert

Awards and Recognition Committee

Ellen S. Cohn, Chair

Charlotte E. Exner

Susan Garber

Stephen J. Page

Ruth Ann Watkins

Development Council

Martha Kirkland,
Co-Chair

Ruth Ann Watkins,
Co-Chair

Winifred Dunn

Melanie Ellexson

Elizabeth Francis-
Connolly

Roger I. Ideishi

Karen Jacobs

Finance Committee

Cheryl Miller-Scott,
Chair

Linda Kohlman
Thomson

Governance Committee

Bette Bonder, Chair

Joseph K. Brey

Mary Ellen Buning

Susan Garber

Jan Miller

Investment Committee

Cheryl Miller-Scott,
Chair

Bette Bonder

Elizabeth Francis-
Connolly

Scholarship Selection Committee

*Reader

Julie Kalahar, Chair

M. Pollie Price, Vice
Chair

Erica R. Alexander

Nancy Baker

Karen Frank Barney

Melba Custer

Tracey E. Ellis

Linda Heilman

Pooja A. Patel

Lynne Richard

Kari Tanta

Deborah Whitcomb

JoAnne Wright*

Scientific Advisory Council

Wendy J. Coster,
Chair

Kristie P. Koenig

Mary Jane Mulcahey

Joan C. Rogers

Elizabeth Skidmore

Timothy Wolf

Volunteer Development & Nomination Committee

Elizabeth Francis-
Connolly, Chair

Jerry Bentley

Mary Ellen Buning

Lela A. Llorens

Kenneth Ottenbacher

Wendy Stav

STAFF CHANGES IN 2018

Mindy A. Hecker, MBA, MLS, joined AOTF on September 7, 2004 as librarian. She took over the role of Director of Information Resources and the Wilma L. West Library in 2007 and became the Associate Executive Director for Administration in October 1, 2010. On June 30, 2018, Mindy retired from her position as Associate Executive Director. She continues as the Director of Information Resources on a part-time basis.

Jeanne Cooper was promoted to the role of Chief Operating Officer in June. Gabriel Garcon joined the Foundation as the Executive Assistant and Natasha Bragg is the new Member and Program Coordinator for Pi Theta Epsilon and the St. Catherine Challenge.

Financial Highlights

Revenues and expenses incurred in supporting our profession through scholarships, research support and publications, development and recognition of leadership, education, and maintenance of the largest collection of occupational therapy resources in the country. The AOTF is a 501(c)(3) organization, Federal Tax I.D. # 136189382.

The Foundation incurred expenses in the following programmatic categories from October 1, 2017–September 30, 2018:

PROGRAM EXPENSES	2018	2017
Research	\$619,043	\$594,653
Education	\$333,976	\$343,083
Total Program Services	\$953,019	\$937,736
SUPPORT SERVICES		
General and administration	\$410,097	\$397,544
Marketing and development	\$272,846	\$246,439
Total Support Services	\$682,943	\$643,983
Total Expenses	\$1,635,962	\$1,581,719

STATEMENT OF FINANCIAL POSITION SEPTEMBER 30

ASSETS	FY 2018	FY 2017
Cash and Cash Equivalents	\$256,905	\$308,350
Inventory	\$358	\$354
Prepaid Expenses and Other Assets	\$9,471	\$9,828
Interest Receivable	\$5,667	\$7,919
Contributions Receivable	\$849,642	\$317,357
Accounts Receivable	\$14,717	\$16,866
Due from AOTA	\$9,278	\$20,749
Investments	\$26,023,239	\$24,254,208
Beneficial Interest in Remainder and Perpetual Trusts	\$2,211,438	\$2,223,530
Property and Equipment, Net	\$43,868	\$15,627
TOTAL ASSETS	\$29,424,583	\$27,174,788
LIABILITIES AND NET ASSETS		
Accounts Payable and Accrued Expenses	\$155,850	\$111,600
Liability for Future Interest in Pooled Income Fund	\$1,492	\$1,492
Capital Lease Obligation Total	\$24,469	\$7,179
TOTAL LIABILITIES	\$181,811	\$120,271
NET ASSETS		
Unrestricted:		
Undesignated	\$18,587,189	\$17,905,793
Board-designated Quasi-endowment Funds	\$456,876	\$456,876
Total Unrestricted Net Assets	\$19,044,065	\$18,362,669
Temporarily Restricted	\$2,606,324	\$1,224,266
Permanently Restricted	\$7,592,383	\$7,467,582
TOTAL NET ASSETS	\$29,242,772	\$27,054,517
TOTAL LIABILITIES AND NET ASSETS	\$29,424,583	\$27,174,788

Copies of the complete audit report prepared by CliftonLarsonAllen, LLP may be obtained by writing to AOTF at 4720 Montgomery Lane, Bethesda, MD 20814.





AOTF THE AMERICAN
OCCUPATIONAL THERAPY
FOUNDATION

Building Evidence to Improve Practice & Health[®]

4720 MONTGOMERY LANE, BETHESDA, MD 20814

(240) 292-1079 • (240) 396-6188 FAX

AOTF@AOTF.ORG • [HTTPS://WWW.AOTF.ORG](https://www.aotf.org)

 AmericanOccupationalTherapyFoundation

 @AOTFoundation



The American Occupational Therapy Foundation is immensely grateful to our generous donors during the fiscal year 2018 (October 1, 2017 – September 30, 2018). As a supplement to our 2018 Annual Report, we are including a complete list of our donors.

\$10,000 and over

Allied Health Media/OT.com
 Florence Cromwell
 Bonita Kraft
 National Board for Certification
 in Occupational Therapy
 North Coast Medical, Inc
 Kathlyn Reed

\$5,000-\$9,999

HealthSouth Corp
 Mindy Hecker
 Illinois OT Association
 Kappa Delta Phi Sorority
 Network For Good
 Rush University
 University of Southern California

\$1,000-\$4,999

Nancy Baker
 Nancy Bagatell
 Belmont University
 Breanna Berg
 Bette Bonder
 J Chris Bradberry
 Patricia Booth
 Boston University
 Daniel Buning
 Scott Campbell
 Charles Christiansen
 Florence Clark
 Florida International University
 Ellen Cohn
 Columbia University
 Colorado State University
 Wendy Coster
 Indiana University
 Irene Frye
 Genni Hester
 Martha Kirkland
 Mary Lawlor
 Nancy Lieftinck
 Brittany Mascaro
 Misericordia University

New York University
 Nova Southeastern University
 Nancy Prendergast
 Ohio State University
 Lynne Richard
 Susan Robertson
 Sand Hill Global Advisors
 Barbara Schell
 Elizabeth Skidmore
 Harlan Temple
 Temple University
 Texas Women's University
 Thomas Jefferson University
 Touro University Nevada
 Tufts University
 University of Illinois-Chicago
 University of Kansas Medical
 Center
 University of Pittsburgh
 University of Missouri
 University of New England
 University of North Carolina
 University of North Dakota
 University of Utah
 University of Wisconsin-Madison
 Washington University in St.
 Louis
 Ruth Ann Watkins
 G Gordon Williamson
 Barbara Winthrop

\$500-\$999

Laura Allen
 Kimberly Bryze
 Donna Costa
 Winifred Dunn
 Judith Falconer
 Kristine Haertl
 Suanne Johnson
 Jennifer Kaldenberg
 Catherine Trombly Latham
 Nicholas Lee
 Kenneth Ottenbacher
 Heidi Pendleton

Sacred Heart University
 Sarah Snyder
 University of Mary
 University of South Dakota
 West Virginia OT Association
 Yen Tran
 Maxine Zinder

\$250-\$499

Allison Blackburn
 Robert Blicksilver
 Brent Braveman
 Azalea Candelaria
 Druanne Davies
 Dorothy Edwards
 Khurshid Escalante
 Rita Fleming-Castaldy
 Andrea Fultz
 Nedra Gillette
 Azela Gohl-Giese
 Hanna Gruen
 Susan Harris
 Zara Harris
 Ruth Humphry
 Indiana State University
 Joann Kennedy
 Marcia Kielhofner
 Erin Kissel
 Virgil Mathiowetz
 Julie Shaperman
 South Dakota Occupational
 Therapy Association
 Texas OT Association
 University of Findlay
 Linda Thomson
 University of Oklahoma
 University of Tennessee
 Martha Wilcockson
 Timothy Wolf
 Jane Rourk
 Renee Taylor
 Toni Walski

\$100-\$249

Marian Allen
Lori Andersen
Maria Alvarado
Michal Atkins
Arlene Baily
Shelly Banet
Marlene Basiago
Julie Bass
Jonathan Basso
Julia Bates
John Bazyk
Normajeane Bennett
Pauline Bennett-Gannon
Shirley Blabey
Alfred Blake
Kathleen Boas
Deborah Bolding
Elisabeth Borgwardt
Ann Borreson
Diane Briggs
Carolyn Brown
Sonja Buchanan
Anita Bundy
Joyce Cabrera
Philippa Campbell
Barbara Cheney
Denise Chisholm
Helen Cohen
Roberta Colton
Elizabeth Crepeau
Cheryl Crow
Patricia Davies
Janet Delany
Andrea Deyo
Mary Donohue
Madelyn Dupee
Aaron Eakman
Norma Eagles
Charlotte Exner
Lee Ann Fallet
Shan-Pin Fanchiang
Susan Fasoli
Corey Feldman
Susan Fine
Rebecca Finni
Gail Fisher
Thomas Fisher
Linda Florey
Lynn Foster
Elizabeth Francis-Connolly
Frank Gainer
Susan Garber
Virginia Gessert
Lynn Gitlow
Yael Goverover
Patricia Greenspan
Benjamin Gross
Cindy Gruhot
Carol Haertlein Sells
Dinah Hartley

Betty Hasselkus
Carole Hays
Barbara Heim
Connie Hendy
Laure Hess
Brenda Howard
Jean and Michael Hoyt
Roger Ideishi
Lynne Israel
Evelyn Jaffe
Lynn Jaffe
Kathleen Kannenberg
Kathy Kaufman
Stephen Kern
Delma Kernan
Alan & Nancy Kessler
Margret Kingrey
Heather Kitching
Maria Klamm
Kristie Koenig
Judi Kolada
Maria Kraemer
Sheama Krishnagiri
Wendy Krupnick
Panelpha Kyler
James Lenker
Sandra Lerner
Dorothy Lesch
Deborah Lieberman
Susan Lin
Lela Llorens
Sheila Longpre
Jeffrey Loveland
Phyllis Madachy
M Madigan
Zoe Mailloux
Gretchen Makinson
Ethel Mandelbaum
Guy McCormack
Ann McDonald
Diane McGinnis
Jeff McMenamy
Paula McNamara
Maria Melendres Cox
Ave Mitta
Manoah Mohanraj
Traci Mourot
James Neff
Peggy Nelson
Kenneth Newton
Melissa Oliver
Linda Olson
Diane Parham
Jean Pennucci
Jill Peterson
Susan Peters
Elizabeth Pfeiffer
Shawn Phipps
Jan Polgar
Janet Poole
Herbert Porter

Katherine Post
Susan Price
Samia Rafeedie
Lorie Richards
Catherine Risigo-Wickli
Sandra Rogers
Caroline Rose
Leslie Roundtree
Donna Rubin
Maureen Russell
Debra Rybski
Phyllis Samara
Karen Sames
Kazuko Saruwatari
Gretchen Schmalz
Debra Scurlock
Rosemary Seppi
Chi-Kwan Shea
Judith Sheehan
Mary Shotwell
Carol Siebert
Julie Sotomayor
Erica Stern
Virginia Stoffel
Linda Struckmeyer
Joan Surfus
Steven Taff
Joan Temple
Linda Tickle-Degnen
Patricia Trossman
Andrea Tyszka
Lynne Umbarger
Shelley Wallock
Laura Wilkinson
Jane Willis
Stacey Willis
Wenbo Yang
Jayne Yatzczak

Below \$99

Dala Aavik
Johanna Abadia
Christine Abbott
Judith Abe-Ishibashi
Elaine Adams
Avis Adams
Allie Adams
Bayla Adelman
Pippa Ader
Osarume Adodo
Vanessa Aguilar
Brock Albee
Jennifer Albright
Katie Alexander
Susan Alexander
Ana Allegretti
Denise Allen
Christopher Allen
Dorene Allis
Jacqueline Allotey

Jonathan Alonso
Mary Altena
Joan Alvarado
Janet Amadio
Amy Ammann
Daksha Anand
Deanne Anderson
Carolyn Anderson
David Anderson
Emily Anderson
Jennifer Anderson
Kathleen Anderson-Hallett
Gayle Andrus
Jennifer Angelo
Emily Anger
Stacy Answini
Eulalia Antinero
Kristin Antolino
Augusto Aranguren
Abraham Armenta
Stephanie Armstrong
Irma Arndt
Melba Arnold
Amy Arotca
Jose Arrevillaga
Elizabeth Artall
Mary Kay Arvin
Kamlesh Arya
Ann Ashe
Norman Askinazi
Katie Atmatzidis
Rebecca Austill-Claussen
Charlene Avery
Jacqueline Babitts
Kathryn Bachleda
Rebeca Baez
Theresa Bailey
Autumn Bailey
Alison Bailey
Karen Baird-Knickerbocker
Kerry Ball
Christina Ball
Andrea Barnett-Krausen
Karen Barney
Kathleen Barone
Penny Bartzan
Norman Basso
Kehaulani Batalona
Miranda Bates
Michelle Baun
Joseph Bava
Mary Baxter
Angeline Bayci
Brenda Baynham
Susan Bazyk
Jennifer Beason
Jason Beaton
Marjory Becker-Lewin
Katherine Beckmann
Wendy Beglin
Nancy Bellendorf

Kathy Bell-Luster
Rebecca Belsanti
Roxanna Bendixen
Amanda Benduzek
Mary Bennett
Chantel Bennett
Fredlyn Berger
Elizabeth Berger
Klara Bergholdt
Laura Bernemann
Emily Best
Somesh Bhatia
Amber Billingsley
Lois Billock
Emily Bills
Loralei Bingamon
Carissa Birchem
Brooke Bishop
Mollie Bivens
Tina Bixenman
Roxie Black
Emilia Blackwell
Torrey Blake
Shirley Blanchard
Jeanine Blanchard
Erna Blanche
Katherine Blank
Evelyn Bloch
Elise Bloch
Carolyn Block
Michael Bloom
Adria Bloom
Beth Bohnsack
Renee Boivin
Cristina Bolanos
Marti Bomgaars
Meredith Bond
Patricia Bonner
Paul Bonzani
Jodi Botte
Lesley Bourque
Marcia Bowker
Susan Bowles
Melinda Bowman
Margaret Boyd
Chelsea Boyer
Susan Brackett
Leonora Bradley
Christine Bradshaw
Ellenmarie Brady
Catherine Brady
Mae Brandon
Jenny Brayton
Kimberly Breeden
Adele Breen-Franklin
Carolyn Ann Brenner
Nanette Brenner
Jamie Brenner
Elizabeth Brewer
Joseph Brey
Marian Brice

Walter Brill
Catherine Brister
Barbara Brockevelt
Angelika Brocklehurst
Susanne Brook
Stephanie Brookover
Canary Brooks
Mary Broussard
Michelle Brown
Holly Brown
Caren Brown
Sandra Brown
Jaclyn Brown
Michelle Brown
Andrew Brown
Robin Brown
Morgan Brown
Deborah Brownell
Louellen Brumgard
Adele Brunson
Donna Brzykcy
Deborah Buchanan
Mary Buckholtz
Laurie Bulus
Deirdre Bunn
Mary Burant
Christopher Burba
Kathleen Burke
Jenny Burke
Maria Burmeister
Kelly Burton
Susan Burwash
Melinda Busby
Cheryl Butler
Contina Bynum
Mark Cable
Susan Cahill
Grace Calcano
Angela Caldwell
Margaret Callahan
Susanna Callender
Regina Campbell
Cari Campbell
Garry Carbone
Paula Carey
Desiree Carlin
Katie Carlson
Megan Carr
Ricardo Carrasco
Karen Carrey
Ginger Carroll
Marilyn Casado
Celina Casas
Tina Casoglos-Adamopoulos
Melanie Cave
Fabius Celerin
Felice Celikyol
Sharon Cermak
Staci Cetina
Monique Chabot
Larissa Chakarova

Jacquelyn Chamberlin
Tina Champagne
Lindsey Chance
Brittany Chandler
Gloria Chandler
Sarah Chapin
Noreen Chappell
Jillian Chase
Trisha Chee
Fatima Chehour
Susan Chervenik
Christine Chesnut
Jerry Chesson
Clarice Chikazawa
Robin Chilton
Joan Chipman
Tracy Chippendale
Windy Chou
Erin Christensen
Lorna Christenson
Pamela Christiansen
Sarah Christmas
Allison Christoff
Eddie Chu
Maria Ciabattini
Crystal Ciccarelli
Claudia Cirrincione
Tamara Claes
Katherine Clancy
David Clark
Monique Clark
Susan Cleghorn
Amy Coe
Alice Cohen
Ariana Cohen
Donna Colaianni
Lisa Colburn
Marilyn Cole
Emily Coleman
Thomas Coleman
Jennica Colvin
Cathryn Comeaux
Shauna Compton
Fabiola Conille
Lauren Conner
Chad Conroy
Velma Conway
Kay Conzemius
Stacy Cook
Ruth Cooper
Meryl Cooperman
Milagros Cordero
Caren Cornelius
Maria Corridore
Joanna Cosbey
Brittney Coscomb
Laura Cosgrove
Karen Cota
Lisa Cover
Jeanne Coviello
Erin Cowell

Betty Cox
Jennifer Crandall
Karen Craven
Thomas Crawford
Kelly Cregar
Amy Cresswell
Patricia Crimer
Patricia Crist
Jean Croll Ewer
Julie Cross
Rebecca Crossland
Kelly Crowley
Catherine Crowley
Melissa Cruz
Sheryl Cruz
Immanuel Cruz
Carmelita Cruz
Marie AnnCruz-Lopez
Sonia Cuadrado Amador
Debra Cullinane
Rebecca Cunningham
Haley Curry
Francis Cuyugan
Chiaki Cyr
Christina Czemske
Teisha D'Áz Velez
Laura D'Alessio
Elaina Dalomba
Marta Daly
Mariana D'Amico
Eileen D'Amico
Sarah Danforth
Lucenelle Daniel
Mary Darnall
Lori Darnulc
Patricia Dasler
Debora Davidson
Mirma Davis
Diana Davis
Christine Davis
Fatima Davis
Tracy Davis
Lana Davis
Monique Dawes
Tina De Angelis
Carmen Gloria De Las Heras
Evan Dean
Ana Defuria
Darcy Dellavecchia
Andrea Delmonico
Maeve Deloughery
Louise Demirjian
Aaron DeNardo
James Dennis
Aileen Deogracias
Brian Despres
Sheri Dewar
Vaz Dhani
Hana Diaz
Heather Dibra
Jamie Dickman

Gino ,Dimattia
Valerie Dingler
Julie Dinius
Lucia DiRado
Lynelle Disanti
Lisa Dittbenner
Karen Ditto
Caitlin Dobson
Rebecca Doles
Cathy Dolhi
Wilfredo Dones
Pamela Dorman
Wilma Dorman
Rachelle Dorne
Maureen Douglass
Cathy Dow-Royer
Nancy Doyle
Ron Drago
Wendy Drake-Kline
Laurie Drew
Mary Droege
Kerra Droucias
Nancy Dubuar
Leyla Duffy
Nathalie Dugger
Juliann Dught
Maureen Duncan
Florence Dunlop
Nancy Dyer
Katherine Dyer
Garland Earwood
Steven Eberth
Cheryl Ecker
Jessica Edelstein
Jane Egan-Erbe
Heidi Eilers
Beth Ekelman-Ranke
Allison Ekiert
Jordan Ellington
Tracey Ellis
Kristen Ellison
Latonya Elsberry
Mark Elwood
Elizabeth Eng
Joyce Engel
Jeanne Englund
Leslie Enneker
Summer Ennis
Aubrey Enriquez
Sarah Epperson
Julie Erb
Jane Erickson
Maureen Erickson
Brett Erspamer
Verna Eschenfelder
Shirley Esenther
Cheryl Esfahan
Susan Esson
Marianne Estournes
Marianne Estrela
Ariel Etehad

Mary Beth Evans
Robert Evans
Edwin Faelnar
Linda Fairchild
Mary Falcetti
Donna Falzone
Shereen Farber
Ruth Farber
Lisa Farr
Jennifer Farr
Colleen Fasnacht
Jacqueline Faulk
Peter Fayard
Caitlin Felker
Shannon Fenix
Heidi Fennel
Sherlyn Fenton
Deborah Fenton
Joyce Fereshetian
Lori Ann Ferrante
Mary Ferraro
Joanne Figone
Shana Finks
Marcia Finlayson
Patricia Finnerty
Jayna Fischbach
Frances Fisher
Christie Fitzgerald
Pamela Fitzner
Carolyn Flanigan
James Flanigan
Alison Flehmer
Anne Fleischer
Tina Fletcher
Erin Flynn
Randall Flynt
Kathleen Foley
Margo Foley
Judith Folweiler
Elaine Fondiller
Rachel Fontana
Victor Foote
Ruth Ford
Cathy Fornwalt
Dawn Forsmith
Kathy Foster
Jill Foster
Lora Foust
Michele Foutz
Kristen Fowler
Ingrid Franc
Theresa Francisco
Martha Frank
Eileen Frankil
Helen Franzen
Jessica Frazer
Linda Frease
Louisa Frederick
Madlyne Frederiksen
Mary Lou M. Fredette
April Free

Teresa French
Brenda Lee Frie
Rebecca Fried
Eileen Friedman
Margaret Fry
Patricia Fuller
Melissa Fulsom
Mary Gabriel
Patrick Gachima
Virginia Gajewski
Rachel Galant
Carolyn Gale
Frances Gallagher
Barrie Galvin
Kimberly Gamble
Patricia Gantz
Jan Garbarini
Shanna Garcia
Leora Garcia
Katilyn Garcia
Catherine Gardner
Teresa Garrett
Hunter Garrity
Erin Garstka
Eileen Garza
Megan Gately
Sarah Geiger
Lynn Geis
Dalit Geller
Patricia Gentile
Joan Gerber
Lindsey Gerfaud
Eric Gerken
Amy Gerney
Tammy Gersh
Ranjit Ghotra
Kathleen Gibbs
Brenda Gibbs
Karen Gibson
Troy Gibson
Betty Ann Gilbert
Simone Gill
Marian Gillard
Donna Giordano
Mildred Gittinger
Patrice Glaess
Amy Glahn
Coralie Glantz
Ronald Glazer
Tara Glennon
Deborah Glossip
Jeanette Glover
Deidra Glover
Jaclyn Goff
Carey Goldenberg
Zvi Goldenberg
Rachel Goldman
Karen Gold-Sherman
Lauren Goldstein
Kathleen Golisz
Judith Gonyea

Eugenia C Gonzalez
Angela Gonzalez
Catherine Gordon
Laurie Gordon
Jaime Gorska
Sabashnee Govender
Amber Goyette
Amy Grace
Christine Graden
Kyle Graesser
Melanie Graves
Gwendolyn Gray
Prince Green
Brandi Green
Cassie Greenway
Carolyn Gregg
Crystal Griffin
Christina Griffin
Leah Griffith
Theta Grimaud
Adrienn Grimsley
Patricia Griswold
Andrea Gross
Christine Grosso
Julie Groves
Alexandra Gruner
Paula Guarniero
Mary Guenzel
Eric Guest
Susanne Guidetti
Katharine Guthrie
Valerie Gutierrez
Juliet Habermusch
Kristin Hagen
Mary Hager
Brennan Hagy
Cindy Hahn
Raegan Hain
Elizabeth Haisman
Elisabeth Hale
Adrian Haley
Nicole Halliwell
Allison Hallman
Brenda Hamilton
Danielle Hamilton
Susan Hammond
Alysa Hand
Dorothy Handley-More
Sandra Hanebrink
Kiley Hanish
Shelby Hankins
Danielle Hansen
Susan Harden-Lizotte
Diane Harlowe
Amy Harper
Karen Harpster
Kathleen Harris
Cynthia Harris
Julia Harris
Lora Harris
Zara Harris

Carie Harris-Logston
Mary Harriss
Megan Hart
Kristin Hartley
Kimberly Hartmann
Lynn Harwell
Tammi Haseltine
Jonathon Haskell
Janelle Hatlevig
Ursula Hawe
Margaret Hayes
Jennifer Hayter
Theresa Heaphy
Jean Hearst
Karin Heaton
Theresa Heck
Michele Heck
Susan Hedden
Emily Heerema-Smith
Emery Heffernan
Blythe Heits
Lee Henig
Nicole Hennings
Pamela Henry
Kathleen Henry
Janette Hensleigh
Mary Beth Herman
Tiara Hernandez
Rebecca Herndon
Gayle Hersch
Steve Hertel
Sarah Hertfelder
Pamela Hess
Judy Hilburn
Mary Hildebrand
Jennifer Hildeman
Alice Hiller
Sabrina Hilton
Larissa Hine
Deborah Hinerfeld
Debra Hines
Jim Hinojosa
Lesley Hirsh
Colette Hishon
Carrie Hixson
Sarah Hizon
Nancye Hodgkinson
Erin Hoeksema
Ada Hoerl
Susan Hoey
Kathleen Hoffer
Kathy Hoffman-Grotting
Catalina Hoffmann
Angela Hoge
Whitney Hohman
Lana Hoke
Patricia Hoke
Holly Holland
Laura Holly
Andrea Holmes
Susan Holmes

Timothy Holmes
Kimberly Holt
Amy Honeck
Kathryn Hoover-Conder
Sandra Hoppe
Linda Horbal
Tina Horbert
Jason Horn
Marcelle Horn-Mandiola
Beverly Horowitz
William Howard
Dana Howell
Rosalee Howell
Catherine Hoyt-Drazen
Kimberly Hsu
Lynne Huber
Nancy Hulahan
Tamera Humbert
Molly Hunter
Shelley Hurwitz
Aziza Hussein
Scott Hutchison
Adrienne Hymel
Susanna Ickes
Jennifer Ikard
Angie Imura
Katherine Inamura
Kari Inda
John Indalecio
Eiri Inenaga
Marilyn Ingraham
Donna Inkster
Sharon Intagliata
Georgette Ireland
Carolynn Isackson
Rayna Isola
Lauren Jackson
Deana Jackson
Douglene Jackson
Daina Jakubowski
Anne James
Fey James
Susan Janke
Cindy Janssen
Mary Janusz
Andrea Jaques
Benjamin Jarosch
Marissa Jay
Janet Jedlicka
Morgan Jenault
Phyllis Jennings
Peggy Jensen
Madison Jenson
Nicholas Jesz
Javier Jimenez
Brett Johnson
Cathleen Johnson
Crystal Johnson
Holly Johnson
Sarah Johnson
Mary Johnson

Mava Johnson
Vicki Johnston
Suzette Jones
Robin Jones
Gwyneth Jones
Lindsay Jones
Keavy Jones
Mary Jones
Lindsay Jones
Grace Jones-Roberts
Criselda Jose
Tara Joyce
Alison Juberg
Julie Jump
Michael Justiss
Aram Kadish
Noemie Kaenel
Jule Kagan
Li Ann Kagawa
Amruta Kalburgue
Keri Kamphoff
Lisa Kane-Green
Shannon Kane-Meador
Samantha Kantor
Elizabeth Kappes
Julie Kardachi
Eric Kartevold
Charmaine Kathmann
Noomi Katz
Sonia Kay
Joan-Hannah Kaytonah
Elaine Keane
Pamalyn Kearney
Kerry Kearns
Deborah Keefe
Kristen Kehl-Floberg
Mary Alice Keith
Marla Kelly
Shannon Kelly
Patricia Kelly
Stephanie Kelly
Grace Kelso
Sara Lynn Kennelty
Brigid Kernan-Terry
Renee Kessel
Mary Khetani
Jacquelin Kilburn
Amporn Kim
Judith Kimball
Hunter Kinard
Rosalie King
Kevin King
Moya Kinnealey
Jill Kirkpatrick
Nancy Kislak
Karen Kitchens-Law
Paula Kitzenberg
Debrah Kless
Nancy Kline
Ann Kline
Emilie Klingman

Jenni Kluever
Kathy Kniepmann
Grace Knight
Jacqueline Knowles
Joanne Knowles
Susan Knox
Carol Knox
Hallie Knuth
Amy Koch
Heather Koch
Emily Koenigbauer
Kimberly Kohl
Kirsten Kohlmeier
Wendy Kolar
Kelsey Koll
Sherry Kolodziejczak
Patricia Kolton
Keith Koppenhoefer
Binhita Korwin
Margaret Kotal
Kirsten Kotraba
Lesleigh Kowalski
Paula Kramer
Lisa Krefft
Barbara Kresge
Nancy Krusen
Beth Krygier
Melissa Kujawski
Terri Kunath
Gopakumar Kuttannair
Leah Kuypers
Catherine Lacina
Melissa Lamb
Patience Lamers
Carmen Lamonica
Cherry Lamsin
Robin Lande
E. Rocky Landers
Michelle Landry
Shelly Lane
Elizabeth Lannigan
Tracy Lapreziosa
Elaine Larkin
Angela Larosa
Kenneth Larson
Barbara Larson
Pamela Lathem
Tracie Laubenstein
Michael Lavoie
Jennifer Lawrence
Katherine Lawson
Vista Le
Dresilla Leben
Stanley Lee
Savannah Lee
Tiffany Leech
Rhonda Lee-Hicks
Natalie Leland-Wiatrowski
Lisa Lemke
Susan Lennan
Cecilia Lentz

Susan Leonard
Donna Leonard
Dana Lepkowski
Margaret Leshar
Fiona Letts
Yaoming Leu
Gloria Levin
Catherine LeViseur
Diane Levitus
Deborah Lewis
Maureen Leyes
Lawrence Liff
Kathleen Lind
Susan Lingelbach
Christine Linkie
Carrie Lippincott
Jodi Lipski
Debbra Lisy
Judith Livermore
Stephanie Long
Tara Looney
Arlene Lorch
Lakesha Lord-Sunamoto
Lynn Losada
Hannah Lott-Havey
Jennifer Lotz
Kate Loughran
Kathryn Loukas
Holly Love
Jackie Love
Gretchen Lowden
Lea Lowery
Gretchen Lucas
Susan Ludwig
Miriam Ludwig
Rosalyn Lueck-Mammen
Karen Lukaszewski
Eric Lundberg
Penelope Lutz
Kathleen Lyons
Linda Lyons
Heidi MacAlpine
Colleen MacBeth
Linda MacDonald
Nancy MacRae
Jo Maczulski
Margaret Madere
Susan Magasi
Barbara Magnatta
Camille Magsombol
Natasha Maher
Marianne Mahle
Madonna Malacame-Cooke
Sharon Malinowski
Muriel Malixi
Samantha Maloy
Marcia Maltz
Brittany Malvick
Mahesh Manghani
Shannon Manigault
Sarah Mannes

Jairrah Mansfield
Lisa Marchand
Erin Marcy
Mallory Marder
Tambra Marik
Pam Marshall
Stephanie Marshall
Jan Marson
Beth Martin
Peggy Martin
Brenda Martin
Rebecca Martinez
Christina Martinez
Mitchell Martino
Maria Martino
Sarah Maryhugh
Sharon Mason
Vicki Mason
Karen Mateling
Edie Matos
Maureen Matthews
Angela Matthiessen
Arlen Maunahan
Jean May
Debbie May
Lorena Mayr
Adrienne Mazzetti
Elizabeth McAnulty
Heather McBride
Sharon Mccloskey
Betsy McCormick
Stephanie McCormick
Melissa McCrady
Deane McCraith
Brittany McDaniel
Sophie McDevitt
Virginia McDonald
Corey McGee
Barbara McGinley-Whalley
Joyce McGraw
Shannon McLaughlin
Caroline MCleary
Cozetta Mcmillian
Jessica McMurdie
Kelly McNamara
Tiffany McNew
Theresa McVeigh
Mary Meadows
Ellyn Medrano
Rachel Medrek
Manjusha Mehra
Sarah Meinhardt
Christine Meister
Nereida Meloi
Sheila Mendon
Beth Merrell
Cheryl Merritt
Mary Beth Merryman
Paul Merson
Maria Mesina
Kevin Metro

Lorinda Mettlen
Lizabeth Metzger
Jaynee Meyer
Julie Milasich
Jaclyn Miley
Peter Milinazzo
Jennifer Miller
Heather Miller-Kuhaneck
Tettyon Miller-Lawrence
Amanda Mills
Tessa Milman
Jan Milstead
Stephanie Mimms
Linda Miron
Takeshi Misawa
Kyle Misch
Anita Mitchell
Alma Mize
Debra Mlotek
Rebecca Mohler
Mary Molea-Iwanwnko
Alexa Molinari
Barbara Mollere Doucet
Roberta Monahan
Roberta Monahan
Diana Moniz
Natalie Monroe
Jodell Monroe
Ashley Montgomery
Rose Moor
Cary Moore
Carolyn Moore
Audra Moore
Joselyn Moore
Mariann Elizabeth Moran
MaryAlice Morgan
Dawn Morin
Sarah Morken
Claire Morress
Jamie Morris
Molly Morris
Margaret Morrison
Joanne Morrissey
Ashlynn Mosby
Kirsten Moss
Heather Moulton
Michelle Mounteney
Carmen Mourfield
Jean Mousseau
Elizabeth Moyer
Shelby Moyer
Mark Mrsa
Mary Jane Mulcahey
Claire Mulry
Lauro Munoz
Anna Munson
John Musgrave
Kimberly Myerson
Kelly Myrto
Debra Nacel
Kimiko Naito

Lauren Nale
Kouli Nalpantidis
Leanna Namovic
Tori Naquin
Nicole Nardella
Maureen Nardella
Christine Nash
Michele Natalini
Lydia Navarro-Walker
Katie Neal
Mary Needham
Taylor Neiser
Katherine Nelson
Hannah Nelson
Katie Ness
Leila Newar
Sheryl Newberger
Julia Newton
Huong Nguyen
Vy Nguyen
Mylinh Nguyen
Marta Nibert
Maryann Nicholas
Susan Nichols
Jeannise Nichols
Elyse Nicolette
Gail Niederman
Anita Niehues
Linda Niemeyer
Renata Niemczyk
Virginia Night
Marie-Colette Noel
Kirsten Norby
Rowena Nova
Danna Nugent-Shah
Maureen Oakes
Theresa Oakley
Ellen Obenberger
Lynne Oberlander
Shirley O'Brien
Virginia O'Brien
Maureen O'Donnell
Shelley O'Donnell
Barbara Oettel
Misao Ogano
Robyn Ogawa
Philip Ogunleye
Susan Ohashi
Julie Olearcek
Katherine Olmedo
Jane Olson
Doreen Olson
Laura Omogroso
Rebecca O'Neil
Barbara O'Neill
Bahareh Ordoubadi
Nigte Orozco
Jamie Orrange
Diana Orsini-Tarkman
Rachel Orzechowski
Kateri Osburn

Kradan Ostby
Annalaurie Ostermiller
Carey Otterstedt
Noreen Ouano
Mary Owen
Roberta Owen
Maria Pagan
Lesley Paige
Barbara Palmer
Stanley Palmer
Linda Palmer
Ernestine Panek
Candace Pantoga
Johanna Papenfus
Nicole Pappalardo
Nicole Paradiso
Nancy Parchevsky
Ada Pardini
Sejal Parikh
Leigh Parker
Rachel Partner
Andrea Parzick
Kaitlin Pate
Martha Paterson
Andrea Patla
Cynthia Patschull
Cheryl Patterson
Joanna Patton
Jessica Patton
Julie Paull
Sherri Pearson
Barry Pederson
Lorraine Pedretti
Jessica Peltz
Elaine Penny
Misti Pepler
Denise Peralta
Cecilia Peralta
Ashley Percival
Brenna Perez
Natalie Perez
Jennifer Perhamus
Monica Perlmutter
Elsa Perniciaro
Amy Perry
Mariah Peterson
Jason Petrea
Joann Petry
Beverly Phillips
Raven Phillips
Sarah Phillips
Marcy Phillips
Rebecca Pickel
Noralyn Pickens
Sara Pickett
Catherine Piersol
Aimee Piller
Regina Pilotte
Jimmy Pinto
Melba Pittard
Teresa Plummer

Anna-Liisa Pold
Jean Polichino
Anna Pollard
Emily Polovick
Sally Poole
Robert Porter
Caroline Portoghese
Kathryn Postolu
Kyla Potgieter
Molly Potter Notkin
Caitlin Pottorf
Janet Powell
Theresa Powers
Courtney Prada
Eliza Prager
Bethany Pratt
Matthias Precin
Kathy Preissner
Tammy Price
Martha Prisco
Nick Propst
Magdalena Purchla
Anthony Quijano
Rachel Rabin
Jessica Rader
Sorna Ramasamy
Victoria Ramia
Angela Ramirez
Ann Randall
Evangeline Randall
Lynsie Randant
Susan Rapsis
Ric Rasco
Mechthild Rast
Cheryl Ratnoff
Yvonne Rattray
Erin Ravenscroft
Elaine Ray
Lina Razzoia
Lauren Read
Ann Redash
Darcee Redden
Kari Jo Redin
Melanie Ree
Elisabeth Refn
Samantha Rehrig
Khandi Reid
Nancy Reider
Grace Reifenberg
Kelli Reiling
Jami Leah Reilly
Marnie Renda
Marnie Renda
Jennifer Renker
Loretta Reust
Leah Revello
Marie Reyes
Laura Rhoa
Melanie Richardson
Nancy Rickerson
Maryann Riding

Rachel Riemenschneider
Laurel Riggs Nichols
Danny Rinker
Beth Ristow
Alissa Rivard
Alicia Rivas
Nicholas Riveland
Effie Rivera
Elizabeth Roarty-O'Herron
Amy Robbins
Duane Roberts
Malissa Roberts
Lynne Roberts
Wayne Roberts
Dryden Robertson
Asheley Robinson
Jennifer Robles
Susan Robosan-Burt
Cathy Roboski
Jill Rocca
Tirza Roda
Stephanie Rodrick
Melany Rodriguez
Dorinda Rodriguez
Karalyn Rogers
Stephen Rogers
Susanne Roley
Jamie Roll
Phillippa Rolle
Leila Rollins
Bonnie Romano
Ana Rosales
Hadassah Rosen
Eileen Rosenbaum
Linda Rosenboom
Judith Rosevear
Molly Ross
Brenda Rossetti
Yves Rosus
Renee Rothhaas
Jan Rowe
Niccole Rowe
Aurora Rowland
Charlotte Royeen
Lori Rubinelli
Tara Rudkoski
John Rund-Scott
Jennifer Ruoff
Michaelinda Rusch
Patricia Rush
Sherry Russak
Elizabeth Russel
Lashandra Russell
Honora Decoursey Russell
Brittany Russell
Ann Russo
Tina Rutledge Veraldi
Julia Ryan
Lynn Ryan
Debra Ryan
Jane Ryan

Melinda Rybski
Sophie Rydin
Jessica Sabbara
Rosemarie Saccomandi
Maryanne Sacco-Peterson
Raedene Sachtleben
Beth Sadler
Fati Saeed
Margaret Sak
Marcelle Salamy
Isabel Salazar
Farida Salhi
Leora Salo
Sheryl Salvador
Karen Sames
Nancy Samuelson
Grace Sanchez
Molly Sanchez
Alejandra Sanchez
Maria Sande
Laine Sande
Kathy Sanders
Heather Sandry
Janet Santos
Phyllis Saphra
Elaine Sapp
Paige Sarchet
Harshala Sarwadnya
Kathleen Saunders
Brittany Saviers
Michelle Savrann
Lauren Sayoc
Justin Schapero
Carrie Scheel
Sandra Schefkind
Alison Scheiderer
Megan Schenk
Joe Schepis
Melissa Schillo
John Schlenk
Kathleen Schlenz
Arlene Schmid
Mara Schmittinger
Jacie Schneider
Andrea Schoeny
Kimberly Schoessow
Jennifer Scholtz
Caren Schranz
Kelly Schrubba
Lisa Schubert
Allison Schubert
Winifred Schultz-Krohn
Trina Schulz
Rebecca Schulz
Theresa Schuster
Nicole Schwam
Susan Schwartz
Jeannette Schwartz
Orit Schwartz
Mary Ann Schwartz
Jo Schweitzer

Lynette Scotese-Wojtila
Janie Scott
Shannon Scott
Sheri Scott
Stacey Scott
Matt Scrabis
Devin Sebek
Gloria Segal
Ruby Seifert
Lori Sell
Damian Sempio
Michael Sentkewitz
Margot Serwer
Marissa Sevic
Tami Sexton
Karen Seymour-ells
Holly Shafer
Elizabeth Shaffer
Josef Shasha
Mary Shea
Elizabeth Sheather
Kristen Sheau
Pamela Sheean
Barbara Sheiffer
Jeanne Shellenberger
Karyn Shenker-Gould
Tracie Sheppard
Katherine Sherlock
Deon Sherman
Amber Sherrod
Julia Shields Odland
Kelly Shimabukuro
Amanda Shimkus
Clark Shin
Rose Shukla
Hillary Siegel
Jennifer Sikula
Barbara Silberschein-Herman
Linda Silver
Rebecca Silver
Alice Simmons
Joan Simmons
Connie Simon
Rebecca Simonsen
Katelnyne Sims
Jodi Singer
Chandra Singh
Fong Siu-Lai
Kelsey Slaughter
Amy Slutzky
Sarah Smeltzer
Alexis Smerlick
Gayle Smith
Dana Smith
Karen Smith
Rebecca Smith
Ashley Smith
Allison Smith
Jean Smith
Jennifer Smith
Ermerlin Smith

Cristina Smith
Whitney Smith-Hutchings
Dawn Snipes
Teepa Snow
Deborah Snyder
Jo Solet
Amy Solomon
Michael Sommer
Carol Sonneborn
Divya Sood
Edward Soon
Carole Soricelli
Monica Soto
Nancy Spangler
Diane Specht
Elizabeth Spence
Elinor Spencer
Kevin Spencer
Shoshana Spiegel
Leslie Spilman
Susan Spoeri
Heidi Spyridakis
Suzanne Sreniawski
Cathleen St Dennis
Kathleen Stachowski
Kristen Stallone
Cortlyn Starr
Katherine Stathes
Michael Steinhauer
Annie Stepka
Alyson Stern
Thomas Stevens
Dawn Stevenson
Karen Stevenson
Sally Stevenson
Kathleen Stoklosa
Carolyn Stoller
Ronald Stone
Karen Stonesifer
Kristine Stout
Susan Strang
Abigail Strassberg
Sarah Streng
Laura Strickland
Chad Strowmatt
June Strub
Karen Stumpo
Elizabeth Sturdevant
Patricia Stutz-Tanenbaum
Michael Suarez
Yolanda Suarez-Balcazar
Maria Succio
Allison Sullivan
Catherine Sullivan
Elizabeth Sullivan-Well
Clare Summers
Miriam Sumner
Connor Svoboda
Lisa Swain
Joy Swakla
Karmen Swanson

Stanton Swanson
April Swanson
Susan Swartz
Bonnie Sweeney
Lisa Sykes
Landthis Szabelski
Stacey Szklut
Julia Szuba
Tisha Taba
Charlotte Tacy
David Tagle
Maureen Tagsip
Marbea Tammaro
Tiffany Tang
Lianne Tannis
Ruth Tanouye
Elizabeth Tarkany
Mindy Tarrant
Neil Taylor
Marci Rae Taylor
Debra Taylor
Kimberly Taylor
Keri Teague
James Terranova
Courtney Tesch
Renee Tesser
Elizabeth Thiers
Traci Thomas
Amy Thomas
Angela Thomas-Davis
Sharon Thompson
Brittany Thompson
Michelle Thompson
Angela Thompson
Catherine Thompson
Skye Thompson
Elsa Tiller
Helen Tilson
Angela Tirabassi
Joan Toglia
Dana Tolle
Tamara Tomasini-Grenier
George Tomlin
Janice Tona
Gaylene Tool
Elizabeth Torcivia
Kimberly Toretta
Patricia Tornabene
Pamela Toto
Patricia Totten
Barbara Tourtellott
Lucinda Towle
Karen Trakhtenberg
Aline Tran
Corrie Trattner
Joseph Troutd
Rita Troxtel
Maribel Trujeque
Danielle Truzzolino
Aaron Try
Fatema Turabi

Lynda Turley
Camille Turner
Kaleigh Turner
Deidra Turner
Anne Uhlig
Erika Unger
Alexandera Urbanski
Elizabeth Urquhart
Cynthia Valdina
Katherine Valenziano
Jantje Van Der Molen
Sarah Vanalstine
Amanda Vance
Raechel Vande Walle
Catherine Varunok
Rudy Vazquez
Jaime Vehovsky
Xander Velas
Craig Veloza
Saraswathy Venkataraman
Marybeth Ventorini-Burkett
Jeanne Ventura
Elizabeth Veon
Irmadel Vertucio
Arlene Villarín
Angelina Vitucci
Karen Vizaniaris
Leah Vizenor
Elena Vizvary
Katalin Vizy
Taylor Volentine
Susan Vollman-King
Tamara Vos-Draper
Meghan Waack
Ashley Wagner
Stephanie Wahlen
Sandra Wainman
Thelma Wakefield
Lorraine Walczyk
Constance Wall
Craighton Wallace
Tina Wallace
Deborah Waltermire
Karen Walters
Myranda Walters
Joseph Wanchik
Joyce Wandel
Elizabeth Ward
Wendy Warner
Allyson Warner
Beth Warnken
Christina Washington
Kate Waters
Michele Watson
James Watson
Michelle Webb
Toni Webb
Ashley Weber
Terri Weiner
Emily Chaya Weinstein
Jennifer Weinstock

Brie Weisman
Orlie Weisser-Pike
Joseph Wells
Seth Werlin
Julianne Werner
Elizabeth Werner-DeGrace
Shirley Werth
Sylvia West
Sarah Wetmore
Mirtha Whaley
Renee Whatling
Elena Wheeler
Anthony White
Tera White
Barbara White
Sarah White
Madeline White
Vicky Whitehead
Eileen Whiteside
Stephen Whittaker
Carla Wilhite
Kimberly Wilkinson
Leota Willens
Kristin Willey
Ellen Williams
Bethany Williams
Lloyd Williams
Linda Williams-Brown
Belle Wilmer
Sarah Wilson
Danika Wilson
Emily Wilson
Mary-Margaret Windsor
Jan Winebarger
Wayne Winistorfer
Sandra Winter
Alan Winters
Cecilia Wirth
Jennifer Wiswall
Elizabeth Wittbrodt
Rose Wittersheim
Alyssa Woerner
Rosalee Wolfe
Sheila Wolfe
Leslie Wolfenden
Elizabeth Wolthoff
Jennifer Womack
Josephine Wong
Lora Woo
Kimberly Wood
Theresa Wooden
Kathleen Woodruff
Staci Workman
Alice Workman
Jo Anne Wright
Christie Wroten
Kathlen Wurster
Ruiying Xu
Linda Yee
Audra Yewchin
Stephanie Yoda

Erin Yoder
In Yoo
Kristine Young
Katherine Youngson
Michele Zaccaria
Anne Zachry
Lauren Zagryn
Parker Zak
Andrea Zakrajsek
Denise Zander
Colleen Zane
Audrey Zapletal
Elizabeth Zborowski
Sheryl Zellis
Ruth Zemke
Brian Zevchak
Xiaoyan Zhang
Robert Zila
Alison Zilioli
Evelyn Zirkle
Eric Zorko
Eve Zucker-Strauss