

Building Evidence to Improve Practice & Health™

Annual Report
2016



Dear Treasured AOTF Donors,

Your devotion to investing in our profession is deeply appreciated. My first year serving as your Chair of the Foundation Board has been so rewarding. Thank you for entrusting me to steward the Foundation that you care about so much.



When our founders chartered the AOTF as a nonprofit organization in 1965, they established the right and privilege of the Foundation to seek and secure philanthropic gifts to promote the Foundation's mission. The founders entrusted the custodianship of the Foundation mission and capacity to the future leaders of the Foundation.

This past year, the AOTF Board of Trustees formulated the Strategic Plan outlined on the next page that will guide our decision making for the next three years.

This Strategic Plan is our blueprint of how we propose to effectively meet our commitment to you – our donors – to support initiatives that build research capacity and advance knowledge in key areas related to occupation, health, and wellbeing.

This plan reflects our commitment to specific strategies that we believe are aligned with our vision and mission, directed toward priority needs, and feasible for us to achieve.

The four pillars of this Strategic Plan are:

- To significantly increase the research workforce prepared to address questions of importance to occupational therapy.
- To support research that advances knowledge in areas of critical need to the OT profession, in particular efforts that address the priorities identified by the Foundation.
- To facilitate effective dissemination and translation of research-based knowledge to support people's full participation in meaningful life activities and quality of life.
- To significantly increase the number of donors and levels of funding for our research programs to support achieving our mission.

The benefits of the Foundation's efforts and investments go far beyond the occupational therapy research community. They also extend past building the evidence that the occupational therapy practice community needs to provide better services and outcomes for their clients. Our efforts are intended to help improve quality of life for all the populations we serve and to bring the greatest good to society.

The success of the Foundation depends on the engagement of numerous volunteers who contribute significant time, creativity, and resources. The Foundation is committed to recruiting, recognizing, and engaging donors, volunteers, and other community members in its work.

We hope you will continue to enthusiastically support AOTF to ensure our success and sustainability.

Sincerely,

A handwritten signature in black ink that reads "Wendy J. Coster".

Wendy J. Coster, PhD, OTR/L, FAOTA
Chair, AOTF Board of Trustees
Member, AOTF Academy of Research
100 Influential People in OT

AOTF FY 2017-19 Strategic Plan

Over the past few years, the American Occupational Therapy Foundation has revisited its mission and vision statements and discussed its priorities for the near and more distant future. One outcome of these discussions was to revise our mission statement to focus on what we believe is our core reason for existing and was the mandate of the founders of our organization:

“To advance the science of occupational therapy to support people’s full participation in meaningful life activities”.

As a small foundation, we believe we can have the most impact by helping to develop and nurture careers in occupational therapy research and by providing support at the early stages of new and innovative research programs. Our Foundation provides an important foundation for occupational therapy’s success.

STRATEGIC OBJECTIVES AND STRATEGIES

Strategic Objective 1

To significantly increase the research workforce prepared to address questions of importance to occupational therapy.

- 1.1 Support efforts to identify and encourage OT students and practitioners to consider research careers, with particular emphasis on those from under-represented groups.
- 1.2 Facilitate participation of more faculty and Department Chair/Program Directors from occupational therapy programs housed in research institutions in systematic research training programs for faculty.
- 1.3 Develop an annual AOTA Conference session targeted at building research infrastructure in occupational therapy programs.

Strategic Objective 2

To support research that advances knowledge in areas of critical need to the OT profession, in particular efforts that address the priorities identified by the Foundation.

- 2.1 Diversify the research portfolio beyond our current support for intervention research grants, with particular emphasis on programs that help develop preliminary or proof-of-concept data or collaborative research efforts.
- 2.2 Monitor the environment to identify and respond to emerging needs or issues relevant to the Foundation’s focus and priorities.
- 2.3 Develop an effective database of information that will facilitate the research efforts of the Foundation and work of the research and policy communities.
- 2.4 Collaborate with AOTA to further develop and communicate research opportunities to the student, practitioner, and research communities.

Strategic Objective 3

Facilitate effective dissemination and translation of research-based knowledge to support people’s full participation in meaningful life activities and quality of life.

- 3.1 Establish a grant program to support translation of research information into practice.
- 3.2 In collaboration with AOTA, investigate cost-effective methods to disseminate ideas and methods for student, practitioner, and faculty scholarly projects that are evidence-based, scientifically rigorous, and make an important contribution to occupational therapy knowledge and practice.
- 3.3 Offer a yearly session at AOTA Conference related to implementation science/knowledge translation.
- 3.4 Work in collaboration with AOTA to establish clear roles for each organization in the continuum of knowledge translation.

Strategic Objective 4

To significantly increase the number of donors and levels of funding for our research programs to support achieving our mission.

- 4.1 Actively involve all members of the Board of Trustees in identifying, soliciting and stewarding donors year round.
- 4.2 Work to ensure all of our Standing Committee members are donors to the Foundation.
- 4.3 Engage more members of the OT community to help identify and attract new volunteers and donors both within and outside the OT community.
- 4.4 Work to ensure that all AOTF events generate net income that can feed back to support the mission.

2016 Scholarship Recipients

North Coast Medical Scholarship - \$5,000 each

Sarah Chang, University of Southern California
Teresa Eklund, Creighton University

OccupationalTherapy.com - \$5,000 each

Joseph Christian Ungco, University of Southern California
Nicole Tester, University of Florida

The National Board for Certification in Occupational Therapy Endowed Scholarship - \$2,327 each

Brittany St. John, University of Wisconsin-Madison
Kimberly Zwissler, Ohio State University
Anna Wotowiec, University of Toledo
Julia Naumes, Pacific University

Willard & Spackman Scholarship - \$2,000 each

Megan Smith, Thomas Jefferson University
Aubrianne Squire, University of Utah

Carolyn Kohn Memorial Scholarship - \$2,000

Amelie Kastning, Stony Brook University – Southampton

Kappa Delta Phi Scholarship - \$2,500 each

Leah Goodman, University of Southern California
Margaret Rusnak, Ohio State University

Mary Minglin Memorial Scholarship - \$1,500

Carl Callaway, St. Ambrose University

Mary Fiorentino Memorial Scholarship - \$1,500

Jessica DeMarinis, Boston University

Robert and Sharon Ryan Endowed Scholarship - \$1,500

Mylinh Nguyen, University of New Mexico

The Network for Lesbian, Gay, Bisexual and Transgender Concerns in Occupational Therapy Endowed Scholarship - \$1,000

Kristen Lowe, Medical University of South Carolina

Alice Jantzen Memorial Scholarship - \$1,000

Kristen Singley, Rush University

The Martha Kirkland Pi Theta Epsilon Endowed Scholarship - \$1,000 each

Dunrey LaRose, University of Alabama at Birmingham
Amanda Casem, Misericordia University

The Bonita Kraft Endowed Scholarship - \$1,000

Alyssa Storrier, University of Texas Medical Branch

Janice McGraw Memorial Scholarship - \$1,000

Matthew Hummer, Lenoir-Rhyne University

AOTA Assembly of the Student Delegates (ASD) Scholarship - \$817

Stephanie Melendez, Adventist University of Health Sciences

The Linda Botten Endowed Scholarship - \$762

Sarah Vaky, University of Texas Medical Branch

Frank Oppenheimer Memorial Scholarship - \$750

Emma Fricke, Rush University

The Ruth Peterson Memorial Endowed Scholarship of the Kappa Chapter, PTE, University of North Dakota - \$750

Alison Tonsager, University of North Dakota

Edith Weingarten Memorial Scholarship - \$750

Samantha Lussier, Boston University

Carlotta Welles Scholarship - \$500

Luis Johnston, Adventist University of Health Sciences

AOTF – STATE OCCUPATIONAL THERAPY ASSOCIATION SCHOLARSHIPS

The Adelaide Ryerson Smith Memorial Endowed Scholarship of the Arizona Occupational Therapy Association

Sabrina Wade, Northern Arizona University
Lindsey Ivey, Arizona School of Health Sciences, A.T. Still University

The Florence Wood Scholarship of the Arkansas Occupational Therapy Association

Amber Parham, Arkansas Tech University – Ozark Campus

District of Columbia Occupational Therapy Association Endowed Scholarship - \$1,500

Megan Essman, Howard University
Cassandra Goodenough, Howard University

The Myra McDaniel Endowed Scholarship of the Florida Occupational Therapy Association

Jessica Leer, Florida A&M University

I hope to pursue a career in neurological rehabilitation and contribute to research in order to further advance the profession of occupational therapy. I cannot express enough thanks for your generous gift – it is a stepping stone towards my future development as an occupational therapist.

Kristen Singley, Rush University,
Alice Jantzen Memorial
Scholarship winner



The Todd Poche Endowed Scholarship of the Louisiana Occupational Therapy Association

Joanna Lutman, Louisiana State University HSC, New Orleans
Kristy Langlinais, Louisiana State University HSC, Shreveport

The Karen Jacobs Scholarship of the Massachusetts Occupational Therapy Association

Kaela Glenn, MGH Institute of Health Professions

The Fred Sammons and Barbara Rider Endowed Scholarship of the Michigan Occupational Therapy Association

Denae Asef-Templin, Grand Valley State University

The New York State Occupational Therapy Association Endowed Scholarship

Sonia Reiter, SUNY Downstate Medical Center
Liana Abadi, Columbia University

The Oklahoma Occupational Therapy Association Endowed Scholarship

Kristin Carlson, University of Oklahoma HSC
Meredith Wyatt, University of Oklahoma at Schusterman HSC

AOTF Fills A Critical Gap in OT Research Funding

2016 marked the third year of funding for the AOTF Intervention Research Grant (IRG) program. To date, we have invested \$750,000 and funded fifteen grants including the three awarded in 2016 (see below). The interventions proposed in the grants should be client-centered, occupation-based and theory-driven. The intent of the IRG program is to provide seed funding for the development of new and/or novel ideas in order to generate preliminary data as proof of concept. Most larger funders, including federal sources and most of the major non-profit foundations, require this data in order to apply to them, yet sources to fund this preliminary work are limited at best. The AOTF IRG occupies a very important niche and fills a critical gap by investing in the development of ideas and data in the early stage of the occupational therapy research enterprise.

The AOTF Scientific Advisory Council (SAC) recommended modifying the IRG program in 2015 to give priority consideration to early stage, emerging, or early midcareer investigators who have an experienced research mentor. Priority was also given to applications that fall into one of the eight AOTF priority research areas already identified by the SAC. These criteria were again used in 2016. The IRG application is a two-step process beginning with a Letter of Intent. Those applicants who meet the basic criteria are invited to submit full applications which are then reviewed by an experienced team, the AOTF Scientific Review Group. This competitive process is modeled after the National Institutes of Health grant review system. Early grant awardees have gone on to present their findings at major

conferences, publish their results, and have applied for larger grants.

The IRG program would not be possible without the support of the American Occupational Therapy Association (AOTA) and the National Board for Certification in Occupational Therapy (NBCOT) which has recently committed an additional \$300,000 over FY 2016-2018. And thank you to the hundreds of students at the 33 schools that supported the IRG through the 2016 St. Catherine Challenge.

FY 2016 AWARDEES



Mary Khetani, ScD, OTR/L

University of Illinois at Chicago
Feasibility Test of the PEM-Plus:
An Innovative Intervention
Planning Guide



**Mansha Mirza, PhD, OTR/L,
MSHOR**

University of Illinois at Chicago
Piloting an Occupational
Therapy Intervention in a
Primary Care Clinic



**Juleen Rodakowski, OTD, MS,
OTR/L**

University of Pittsburgh
Empowering Caregivers After
Stroke

2016 SCHOLARSHIP RECIPIENTS continued from page 4

The Harlan and Rita Temple South Dakota Occupational Therapy Association Endowed Scholarship

Andrew Kuik, University of South Dakota

The Chris Ebbers Endowed Scholarship of the South Carolina Occupational Therapy Association

Danielle Kapustka, Medical University of South Carolina

Kelly Ramey, Trident Technical College

The Texas Occupational Therapy Association Endowed Scholarship

Victoria Martyn, University of Texas at El Paso

Caroline Cody, Austin Community College

The Fred Sammons Endowed Scholarship of the Virginia Occupational Therapy Association

Amy Lehman, Mary Baldwin College

The West Virginia Occupational Therapy Association Charlotte Prudich, Elizabeth B. Devereaux, and Deborah Shamblin Endowed Scholarship

Shannon McCombie, West Virginia University

Jenna Stear, West Virginia University

The Wisconsin Occupational Therapy Association Endowed Scholarship

Hanna Paul, University of Wisconsin - Milwaukee

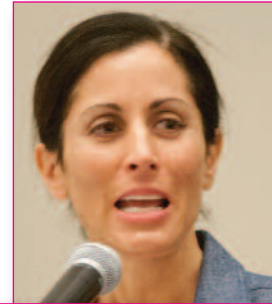
Chicago Was Our Kind of Town: Record Sponsorship of AOTF Events

The AOTF booth at the AOTA Annual Conference in Chicago highlighted our new tagline, *Building Evidence to Improve Practice & Health*. The tagline, with its bold graphics, introduced conference attendees to AOTF's emphasis on the future of OT.

Over 500 people attended the Breakfast with a Scholar event and saw Lisa Genova, PhD, author of *Still Alice*, relate what she learned about Alzheimer's disease (AD). She discussed the need to focus on living with AD rather than dying, how to be with someone with AD and how to use the principle of improvisational acting – saying Yes, and..., to connect with people with AD.

The State of the Science Symposium brought together Joy Hammel, PhD, OTR/L, FAOTA and Diane Smith, PhD, OTR/L, FAOTA with Robin Jones, MPA, COTA/L, ROH and Elliot Roth, MD to discuss the 25th Anniversary of the Americans with Disabilities Act. Dr. Smith's presentation can be accessed on the *OTJR: Occupation, Participation and Health* website.

The *Something for Everyone Gala* took full advantage of the architectural showcase, the Chicago Cultural Center, to present a full array of delicacies, music, and dancing to everyone's delight.



AOTF THANKS ITS MANY SPONSORS WHO MADE THESE EVENTS POSSIBLE:

Breakfast with a Scholar

Premium Level



Silver Level



DONALD LANG

Table Sponsors

BOSTON UNIVERSITY, COLUMBIA UNIVERSITY, NOVA SOUTHEASTERN UNIVERSITY, UNIVERSITY OF PITTSBURGH, ST. CATHERINE UNIVERSITY, WASHINGTON UNIVERSITY IN ST. LOUIS

Friends

KRISTINE HAERTL, PHD, OTR/L, FAOTA and NEW YORK UNIVERSITY

State of the Science Symposium

Premium Level



Something for Everyone Gala

Gold Level



AND A SPECIAL THANK YOU TO OccupationalTherapy.com

AOTF St. Catherine Challenge: A Record-Breaking Year



Thirty-three schools banded together to raise over \$23,000 for AOTF's Intervention Research Grants, the highest participation of the AOTF St. Catherine Challenge since it began in 2013.

Rush University, a first-time participant, raised over \$8,500 to secure the President's Award for the top fundraising school. Rush University also received the Rookie of the Year award – henceforth renamed *RUSH* to the Top based on their exemplary efforts. Columbia University raised over \$3,400 and earned the Award of Excellence and St. Catherine University raised over \$1,800 to take home the Award of Merit. All top schools earned prizes to AOTF events at the AOTA Annual Conference.

This student-led fundraiser continues to grow with over 45 OT and OTA schools committed to participate in 2017.

Diamond Level \$7,500+ Raised

Rush University

Gold Level \$2,500+ Raised

Columbia University

Silver Level \$1,000+ Raised*

St. Catherine University
University of North Dakota
Misericordia University

Bronze Level \$500+ Raised*

The College of St. Scholastica

University of Findlay
University of Wisconsin - LaCrosse
Boston University

Challenge Participants*

Louisiana State Health Science Center
University of Southern California
Virginia Commonwealth University
New York University
Salus University
Spalding University
Indiana State University

Washington University School of Medicine Program in Occupational Therapy

Erie Community College - North Campus

Florida International University

Thomas Jefferson University

Colorado State University
Rockhurst University

University of Tennessee Health Science Center

Tufts University

Creighton University
University of Illinois Chicago

St. Louis University
Nova Southeastern University - Tampa Chapter

Mount Mary University
University of New Hampshire

College of Saint Mary
Northern Arizona University

Bay Path University

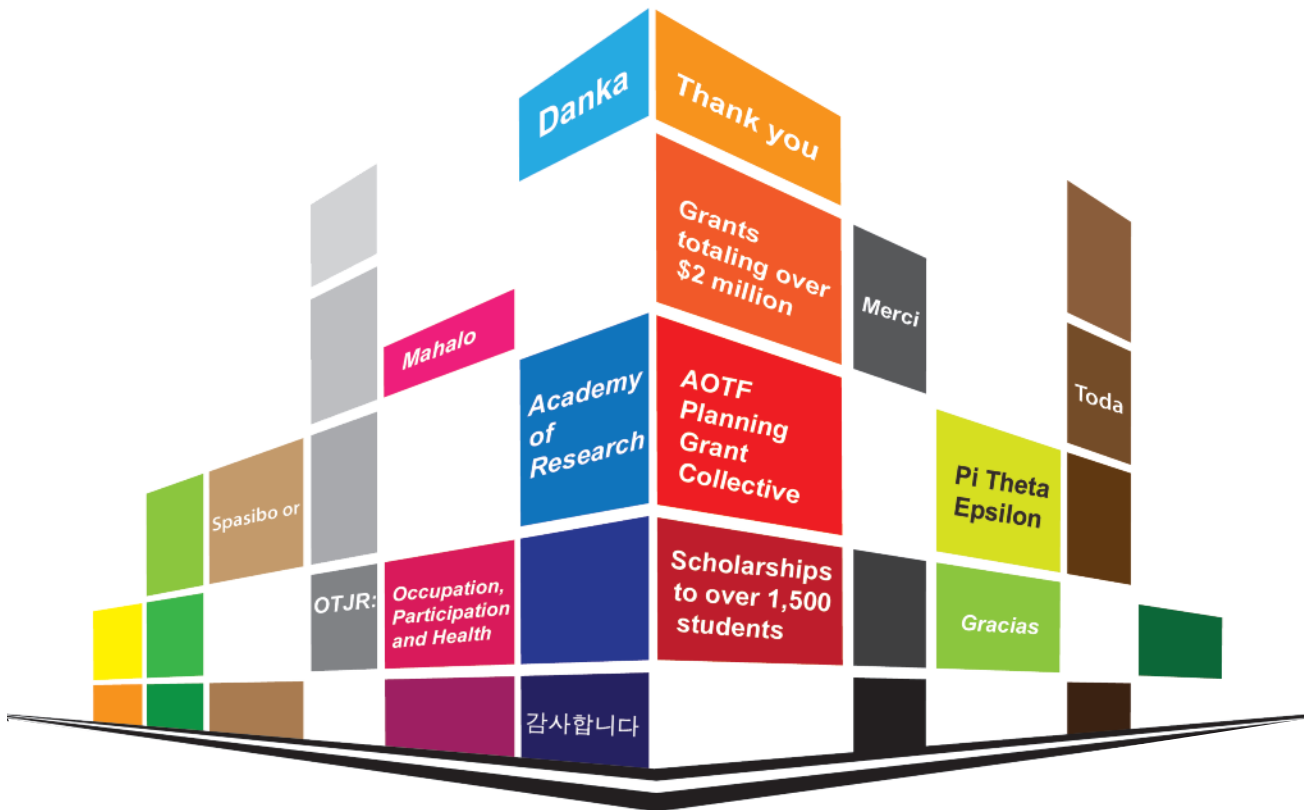
**Schools listed by amount raised.*



Rush University – 2016 St. Catherine Challenge President's Award winner and RUSH to the Top awardee.

Why Support AOTF?

AOTF is the only national nonprofit charitable organization investing in our profession. Throughout our five decades long commitment to advancing the science of occupational therapy, we have invested your money wisely.



BUILDING EVIDENCE TO IMPROVE PRACTICE & HEALTH

WE NEED YOU!

AOTF relies solely on funding from donors like you. By considering AOTF your charity of choice, you can demonstrate your commitment to advancing the profession in the following ways:

Donations to AOTF support individuals who will create the evidence needed to strengthen the scientific base of occupational therapy. This is essential if we are to continue to grow as a profession.

Susan L. Garber, MA, OTR,
FAOTA, FACRM
AOTF Academy of Research
100 Influential People in OT

MAKE A GIFT EVERY YEAR

With an annual gift, you continue the vision of our founders by being thought leaders and investing in contemporary practice-driven projects. Your direct gift to AOTF is 100% tax deductible.

BECOME A MONTHLY DONOR

Your monthly contribution to fully fund our mission is the lifeblood needed to invest in building evidence to improve practice and health. Simply call AOTF at 240-292-1050 to establish your monthly gift today.

LEAVE A LEGACY

Name AOTF as a beneficiary of your life insurance policy and leave a legacy of support to AOTF. Work with your financial planner and insurance agent to donate a portion of your estate or life insurance policy to AOTF.

AOTF Academy of Research 2016 Inductees

The AOTF Academy of Research recognizes individuals who have made exemplary and distinguished contributions toward the science of occupational therapy.



Gary Bedell, PhD, OTR/L, FAOTA, Tufts University

Dr. Bedell's research and scholarship involves development of measures and interventions focused on participation of children and youth with disabilities. His current research involves development and testing of an app-based coaching intervention for teenagers with traumatic brain injury.

Roseann Schaaf, PhD, OTR/L, FAOTA, Thomas Jefferson University and the Farber Institute for Neuroscience

Dr. Schaaf is a translational scientist who has devoted her career to the study of children with autism and other developmental disorders, in particular how processing and integrating sensory information impacts participation in daily occupations. Dr. Schaaf is a 2015 Intervention Research Grant recipient.



Jenny Ziviani, PhD, BAppSC(OT), MEd, Queensland Children's Health Service and The University of Queensland, Australia

Dr. Ziviani's 30-year background as a clinician, academic and researcher has focused on the well-being of children at risk of a range of physical, developmental and psychosocial conditions, their families, and the communities in which they live.

2016 AWARDEES

AOTA-AOTF Presidents' Commendation Award in Honor of Wilma L. West

Mary Foto, OT, FAOTA, CCM

AOTF Award for Community Volunteerism

Fern Silverman, EdD, OTR/L and Andrea Tyszka, MA, OTR/L

A. Jean Ayres Award

Alison E. Lane, PhD, OTR

AOTF Meritorious Service Award

Patricia (Pat) Booth, MAT
Mary Foto, OT, FAOTA, CCM

Emily A. Kringle, MOT, OTR/L

Diana L. Ramsay, MPP, OTR, FAOTA

AOTF Leadership Service Commendation

Susan M. Fitzpatrick, PhD
Melissa Oliver, MS, OTR/L

*I am humbled, honored, and so surprised! And remain so grateful for the experiences through AOTF that led to where I am today.
Thank you!*

Emily Kringle, MOT, OTR/L
Meritorious Service Award winner
Past National President of PTE
PhD student, University of Pittsburgh



Pi Theta Epsilon: Ensuring Future OT Success



Pi Theta Epsilon, the occupational therapy honor society, continues to advance its mission to support the practice of authentic occupational therapy by promoting research, leadership, and scholarly activities by its members. Ninety-five schools now have active chapters, with

West Coast University, University of Missouri, Huntington University, Northern Arizona University, Nazareth College, Stanbridge College, and Abilene Christian University most recently joining PTE.

RESEARCH

The PTE Mary J. Bridle First Research Award went to Sara Ulfers, a 2017 OTD candidate at Washington University in St. Louis for her study "Occupational therapists' perceived knowledge needs on cancer-related cognitive impairments". The award fosters scholarship and first research efforts within the OT community of students, young practitioners, and early researchers. In addition to the monetary award, Ulfers received guidance on how to pursue publication in *OTJR: Occupation, Participation and Health* and her research will be published in 2017.

Eight groups of PTE students shared their research activities during the third annual PTE poster presentation at the AOTA/NBCOT Student Conclave. Conclave attendees also had the opportunity to see the PTE special presentation – Your career path: Steps to consider when thinking about your involvement in research.

LEADERSHIP

The Pi Theta Epsilon President's Award recognizing outstanding scholarly activity was jointly presented to the University of North Dakota and University of Mary for their coordination of the 9th annual North Dakota Occupational Therapy Student Conference with over 100 students in attendance.



PTE Wayne State University students

Conclave and attended the PTE special presentation — Navigating your career path: Steps to consider when thinking about your involvement in research.

COLLABORATION & CONNECTION

Thirty-six chapters attended at the PTE Alumni Reception during the 2016 AOTA Annual Conference.

Also in 2016, PTE launched an exciting webinar series on YouTube focusing on disseminating research information directly to chapters and members; the most recent webinar features the use of "Data Driven Decision Making" as a clinician.



PTE National Coordinator Michele Fernandez (top) with PTE Secretary Rebecca Hastings, PTE President Joe Brey, and PTE Vice President Kim Clark enjoying the Chicago snow after the AOTF gala.

SCHOLARLY ACTIVITY

PTE chapters strengthened their members' current and future practice in OT by holding study and review sessions, lecture, and weekend workshops.

PTE members came together for their Annual Business Meeting at the AOTA/NBCOT Student

AOTF Board of Trustees and Staff

In 2016, AOTF bid a fond adieu to Carolyn Baum, Martha Kirkland, David Emerson, and Kinsuk Maitra; each of whom was a valuable part of the AOTF Board. We are happy to announce the new trustees – Susan Garber and Mary Lawlor (AOTF Academy of Research members) and Chris Brumfield (husband of the late Maralynne Mitcham — past AOTF President and Honorary Life Member). We welcome them to the AOTF family. Dr. Lawlor will also serve as the Scientific Advisory Council Chair.

AOTF also said goodbye in 2016 to Julie Bass, AOTF Director of Research for four years.



Susan Garber, Baylor College of Medicine



Mary Lawlor, University of Southern California



Chris Brumfield, RCB Consulting, LLC

BOARD OF TRUSTEES

As of January 1, 2017

Executive Committee

Wendy J. Coster, *Chair*
Boston, Massachusetts

Elizabeth Francis-Connolly,
Vice Chair
Portland, Maine

Jan Miller Polgar, *Secretary*
London, Ontario, Canada

Cheryl Miller, *Treasurer*
Sunrise, Florida

Trustees

Bette Bonder
Shaker Heights, Ohio

Joseph K. Brey
Ellicott City, Maryland

Roy C. (Chris) Brumfield
Charleston, South Carolina

Mary Ellen Buning
Denver, Colorado

Susan Garber
Las Vegas, Nevada

Mary C. Lawlor
Los Angeles, California

Non-Voting Members

Scott E. Campbell
AOTF CEO

Amy J. Lamb
AOTA President

Shawn Phipps
AOTA Vice President

Honorary Life Members

Donald Lang
Nancy Snyder Liefinck
Jane Davis Rourke
Fred Sammons

STAFF MEMBERS

As of January 1, 2017

Scott E. Campbell
Chief Executive Officer

Carol Bradwell
Library Cataloguer

Azalea Candelaria
Chief Development Officer

Jeanne Cooper
Manager, Executive Office

Michele Fernandez
Program Associate

Mindy A. Hecker
Associate Executive
Director for Administration
and Director, Information
Resources and The Wilma
L. West Library

Helene Ross
Communications Associate

Jennifer Siegel
Office Assistant

I have never worked so tirelessly to achieve any goal, and receiving your generous award helped lift much of the financial burden felt throughout the process. Because of this scholarship, I was able to complete my final rigorous semester of OTA school and register for the NBCOT Boards Exam. I just recently learned that I passed; I am officially a licensed COTA. Thank you, from the bottom of my heart, for helping make my dreams a reality, and in turn allowing me to dedicate myself to this incredible field.

Caroline Cody, Austin Community College,
Texas Occupational Therapy Association Endowed
Scholarship winner





Florence Stattel Heirs Establish Scholarship and Continuing Education Fund

In June 2016, AOTF announced the establishment of The Florence Stattel Continuing Education Fund and the Florence Stattel Endowed Scholarship thanks to the thoughtful planning of Ms. Stattel and her sister Marie Kress.

For over 60 years, Florence Stattel worked tirelessly as an occupational therapist and advocate of its value to the world.

Ms. Stattel worked closely with Henry Kessler, the renowned physician, at the Kessler Institute for Rehabilitation. She taught at several universities and was the first honoree of the Eleanor Clark Slagle Lectureship and received AOTA's prestigious Award of Merit. Stattel was instrumental in establishing the World Federation of Occupational Therapists and continued to provide pro bono occupational therapy services even after retirement.

In honor of Ms. Stattel's legacy and support of the profession of OT, the Stattel family established an endowed scholarship that will begin in 2017 and a continuing education fund for OTs to attend AOTF endorsed and industry-recognized occupational therapy scientific symposia, summits, and conferences to inspire and inform further academic pursuits and/or apply evidence-based research to practice.

I was told when I entered the field that physical disabilities would be out in a few years; psychiatry was in forever. We always had a personality; we always had personality problems... We have survived because we have a broad enough title to be amoebic. And we take the shape of the society as it moves from one shape to another...

You are extending yourself out to other people rather than closing into your own thing. And the further you get from this, the more you're able to see OT, the more OT has come into focus for me.

Florence Stattel, Oral History



Digital Growth at the Wilma L. West Library

The Wilma L. West Library and Archive took a major step into the digital world by converting 68 VHS tapes to a digital MP4 format. These recordings include interviews with Lena Hitchcock, a reconstruction aide, the first AJOT editor Charlotte Bone, and Helen Willard and Clare Spackman, editors of the classic occupational therapy textbook. This is the first step; additional resources will be digitized over the next several years. Contact the WLW Library, wllib@aotf.org, for access to these and other archive resources.

Library staff members add entries weekly to OT SEARCH, the online public access catalog, and it has grown to over 45,000 items including journal articles from over 50 different publications.



OTJR: *Occupation, Participation and Health*, AOTF's peer-reviewed research journal, continues to publish on a quarterly basis and in October 2016, published a special issue on occupation and justice with guest editors Elizabeth Anne Kinsella, PhD, OT Reg. (Ont.) and Evelyne Durocher, PhD, OT Reg. (Ont.), both of the University of Western Ontario. A special issue on public health is scheduled to be published in October 2017.

Volunteers Add Vibrancy to AOTF

Every function of AOTF is enriched with our volunteer partners and leaders. We work throughout the year with volunteers from all areas of OT to deliver the programs you have come to rely on.

Through diverse and interesting committee opportunities, dozens of volunteers donate their time and talent to serve on an AOTF committee.

Have you considered becoming an AOTF volunteer?

Visit www.aotf.org and complete the simple Volunteer Interest Form to join our volunteer ranks!

WE THANK THESE DEDICATED VOLUNTEERS FOR THEIR SERVICE IN 2016.

Audit Committee

David Emerson, *Chair*
Pat Booth
Mary Evert

Awards & Recognition Committee

Kinsuk Maitra, *Chair*
Mary Ellen Buning
Ruth Ann Watkins

Development Council

Martha Kirkland, *Co-Chair*
Ruth Ann Watkins, *Co-Chair*
Melanie Ellexson
Elizabeth Francis-Connolly
Karen Jacobs
Ellen Kolodner
Nicolaas Van Den Heever

Finance Committee

Martha Kirkland, *Chair*
David Emerson
Kinsuk Maitra
Jan Polgar
Linda Kohlman Thomson
Donald Lang

Governance & Nomination Committee

Jan Polgar, *Chair*
Joe Brey
Mary Ellen Buning
Martha Kirkland
Kinsuk Maitra

Investment Committee

Martha Kirkland, *Chair*
Chris Brumfield
Donald Lang
Kinsuk Maitra
Jan Polgar

Scholarship Selection Committee

Kristine Haertl, *Chair*
Lisa Bodry
Terri Cassidy
Melba Custer
Linda Heilman
Julie Kalahar
Cheryl Miller
Pollie Price
Jan Stube

Scientific Advisory Council

Carolyn Baum, *Chair*
Leeanne Carey
Susan Fitzpatrick
Helene Polatajko
Joan Rogers
Elizabeth Skidmore

The Foundation is the only philanthropic organization devoted solely to the advancement of occupational therapy through research. An investment in the Foundation is an investment in our future.

Elizabeth Skidmore, PhD,
OTR/L, FAOTA
AOTF Scientific Advisory
Council, Academy of Research
100 Influential People in OT



It is my privilege and honor to give back to the occupational therapy profession through volunteerism with AOTF. It is important for every occupational therapy practitioner and student to advocate for the profession. Assisting AOTF with its mission is one way to develop resources that all of us can do.

Karen Jacobs, EdD, OT, CPE,
FAOTA, AOTF Development
Council member
100 Influential People in OT

Securing the Future

The American Occupational Therapy Foundation is immensely grateful to our generous donors during the fiscal year 2016 (October 1, 2015 – September 30, 2016). Our event sponsors and contributors to the AOTF St. Catherine's Challenge are recognized in other areas of this donor report. A more extensive list of donors is on our website at www.aotf.org.

\$25,000 and above

The Estate of Marie Kress
The Estate of Florence Stattel
American Occupational
Therapy Association
National Board for
Certification in
Occupational Therapy

\$10,000-\$24,999

Carolyn Baum
OccupationalTherapy.com
North Coast Medical, Inc.

\$5,000-\$9,999

Charles Christiansen
Donald Lang
Kathlyn Reed
The Estate of Maryella
Strane

\$2,500-\$4,999

Mindy A. Hecker
Oklahoma Occupational
Therapy Association
Susan Robertson
Ruth Ann Watkins
Gordon Williamson

\$1,000-\$2,499

Michele Berhorst
Bette Bonder
J. C. Bradberry
Azalea Candelaria
Ellen Cohn
Wendy Coster
Melanie Ellexson
Debi Hinerfeld
Karen Jacobs
Panelpha Kyler
Nancy Snyder Liefinck
North Carolina
Occupational Therapy
Association
Barbara Schell
Elizabeth Skidmore
Frederick Somers
Virginia Stoffel
WebPT
West Virginia Occupational
Therapy Association
Barbara Winthrop

\$500-\$999

Assembly of Student
Delegates
Karen Barney
Julie Bass
Scott Campbell
Sherrilene Classen
Karen Duddy
Kristine Haerfl
Marcia Kielhofner
Amy Koch
Deborah Lieberman
Kinsuk Maitra
Jan Polgar
Charlotte Royeen
Fred Sammons
Sarah Snyder
Deborah Whitcomb

\$250-\$499

Chris Alterio
Anderson Books Inc.
Marjory Becker-Lewin
Gary Bedell
Kimberly Bryze
Erica Buller
Angela Davis
Susan Fitzpatrick
Frank Gainer
Lynn Gitlow
Hanna Gruen
Carol Gwin
Alison Harris
Jim Hinojosa
Ruth Humphry
Amol Karmarkar
Martha Kirkland
Amy Lamb
Mary Lawlor
Sheri Montgomery
Kenneth Ottenbacher
Heidi Pendleton
Lynne Richard
Simple IT Care
Texas Occupational Therapy
Association
Catherine Trombly Latham
Toni Walski
Maxine Zinder

\$100-\$249

Elizabeth Alianan
Ana Allegretti
Lori Andersen

Marian Arbesman
John Artman
Mary Kay Arvin
Jennifer Austraw
Camille Baldwin-Bonney
Adetutu Balogun
Marlene Basiago
John Bazyk
Jeanine Beasley
B Joan Bellman
Normajean Bennett
Pauline Bennett-Gannon
Michele Berro
Andrea Bilics
Roxie Black
Robert Blicksilver
Kathleen Boas
Deborah Bolding
Ann Borreson
Catherine Brady
Jenna Bruegger
Anita Bundy
Mary Ellen Buning
Philippa Campbell
Denise Chisholm
Claudia Cirrincione
Florence Clark
Penelope Moyers Cleveland
Shaun Conway
Elizabeth Crepeau
Mary Darnall
Patricia Davies
Ann Deaton
Jean Deitz
Janet Delany
Cathy Dolhi
Mary Donohue
Leah Duckworth
Aaron Eakman
Norma Eagles
Beth Ekelman-Ranke
Cynthia Epstein
ETS Cares Campaign
Mary Evert
Janet Falk-Kessler
Shereen Farber
Linda Fazio
Gail Fisher
Anne Fleischer
Rita Fleming-Castaldy
Linda Florey
Lynn Foster
Mary Foto
Elizabeth Francis-Connolly

Gloria Frolek Clark
Susan Garber
Karen Gibson
Nedra Gillette
Mildred Gittinger
Yael Goverover
Susan Graves
Susan Haiman
Carolyn Hanson
Rachel Hardie
Zara Harris
Kimberly Hartmann
Neil Harvison
Carole Hays
Barbara Heim
Penny Helfrich
Connie Hendy
Alexis Henry
Kari Inda
Leslie Jackson
Lauren Jackson
Evelyn Jaffe
Margaret Jolly
Stephen Kern
Nancy Kidulski
Judi Kolada
Barbara Kornblau
Margaret Kotal
Wendy Krupnick
Mary Kustermann
Barbara Larson
Claudia Leonard
Susan Lin
Lela Llorens
Sheila Longpre
Kathryn Loukas
Kathleen Lubarsky
Rosalyn Lueck-Mammen
M. Jeanne Madigan
Gretchen Makinson
Christine Marzo
Scott Matash
Judy Matsuoka-Sarina
Valnere McLean
Ernest Michaud
Manoah Mohanraj
Angeline Monroe-Mayo
Mary Jane Mulcahey
Melissa Oliver
Linda Olson
Stephen Page
Sue Parkinson
Joanna Patton
Celia Perez

Andrew Persch
Maureen Peterson
Jackalyn Pettit
Shawn Phipps
Noralyne Pickens
Sally Poole
Evelyn Post-Dunn
Carol Powell
Susan Price
Cynthia Raczko
Ruth Ramsey
Ric Rasco
Lorie Richards
Monica Robinson
Leslie Roundtree
Jane Rourk
Jacquelyn Ryan
Joyce Sabari
Susan Sain
Grace Sanchez
Roseann Schaaf
Gretchen Schmalz
Winifred Schultz-Krohn
Julie Shaperman
Elizabeth Sheather
Mary Shotwell
Carol Siebert
Gayle Smith
Susan Spitzer
Franklin Stein
Mitchell Stern
Stephanie Stiglets
Jan Stube
Susan Swinehart
Marbea Tammara
Steven Taylor
Louise Thibodaux
Juliann Thomas
Linda Thomson
Linda Tickle-Degnen
Barbara Townsend
Leah Trefz
Patricia Trossman
Michael Urban
Christine Urish
Lucinda Wagman
Shelley Wallock
Patricia Warehime
Kristin Warren
Michele Watson
Lydia Werner
Martha Wilcockson
Jane Willis
Marnie Wortham

Financial Highlights

Revenues and expenses incurred in supporting our profession through scholarships, research support and publications, development and recognition of leadership, education, and maintenance of the largest collection of occupational therapy resources in the country. The AOTF is a 501(c)(3) organization, Federal Tax I.D. # 136189382.

The Foundation incurred expenses in the following programmatic categories from October 1, 2015–September 30, 2016:

PROGRAM EXPENSES	2016	2015
Research	\$571,944	\$651,549
Education	\$339,386	\$322,544
Total Program Services	\$911,330	\$974,093
SUPPORT SERVICES		
General and administration	\$439,489	\$468,134
Marketing and development	\$340,492	\$258,207
Total Support Services	\$779,981	\$736,341
Total Expenses	\$1,691,311	\$1,700,434

STATEMENT OF FINANCIAL POSITION SEPTEMBER 30

ASSETS	FY 2016	FY 2015
Cash and Cash Equivalents	\$234,121	\$195,308
Inventory	\$1,556	\$2,819
Prepaid Expenses and Other Assets	\$41,801	\$14,972
Interest Receivable	\$9,324	\$9,349
Contributions Receivable	\$250,538	\$99,409
Accounts Receivable	\$6,828	\$22,336
Due from AOTA	\$38,574	\$1,506
Investments	\$22,614,897	\$21,654,024
Beneficial Interest in Remainder and Perpetual Trusts	\$2,101,785	\$2,041,917
Cash Surrender Value of Life Insurance, Net	\$6,679	\$6,679
Property and Equipment, Net	\$22,443	\$32,572
TOTAL ASSETS	\$25,328,546	\$24,080,891
LIABILITIES AND NET ASSETS		
Accounts Payable and Accrued Expenses	\$80,230	\$130,308
Liability for Future Interest in Pooled Income Fund	\$1,492	\$1,492
Capital Lease Obligation Total	\$12,548	\$17,606
TOTAL LIABILITIES	\$94,270	\$149,406
NET ASSETS		
Unrestricted:		
Undesignated	\$16,784,287	\$16,032,543
Board-designated Quasi-endowment Funds	\$456,876	\$456,876
Total Unrestricted Net Assets	\$17,241,163	\$16,489,419
Temporarily Restricted	\$887,981	\$589,536
Permanently Restricted	\$7,105,132	\$6,852,530
TOTAL NET ASSETS	\$25,234,276	\$23,931,485
TOTAL LIABILITIES AND NET ASSETS	\$25,328,546	\$24,080,891

Copies of the complete audit report prepared by CliftonLarsonAllen, LLP may be obtained by writing to AOTF at 4720 Montgomery Lane, Bethesda, MD 20814.

THE AMERICAN OCCUPATIONAL THERAPY FOUNDATION

4720 MONTGOMERY LANE, BETHESDA, MD 20814

(240) 292-1079 • (240) 396-6188 FAX

aotf@aotf.org

WWW.AOTF.ORG

www.facebook.com/AmericanOccupationalTherapyFoundation

Twitter: @AOTFoundation





The American Occupational Therapy Foundation is immensely grateful to our generous donors during the fiscal year 2016 (October 1, 2015 – September 30, 2016).
As a supplement to our 2016 Annual Report, here are our valued \$50-\$99 donors.

Christine Abbott
Janet Adcox
Dorene Allis
Mary Altena
Maria Alvarado
Amy Ammann
Ann Ashe
Michal Atkins
Joan Avallone
Charlene Avery
Rebecca Bahnke
Arlene Baily
Charlene Baize
Nancy Baker
Mary Baptiste
Beth Barlow
Mary Barnes
Mary Baxter
Anne Behoteguy
Karen Betzig-Lundberg
Lori Bjerke
Erna Blanche
Shirley Blanton
JoAnn Breimaier
Juanita Bruns
Jacqueline Bryson
Pamela Cabrejo
Regina Campbell
Marie Carbonneau
Karen Carrey
Angela Cecil
Nancy Challan-Fioraliso
Jacquelyn Chamberlin
Cordelia Chan
Susan Chan
Debra Chasanoff
Christine Chen
Tracy Chippendale
Lucy Christopher
Nicole Cipriani
David Clark
Leora Comis
Lisa Connor

Caren Cornelius
Marie Corsello
Marian Costello
Jean Croll Ewer
Dan Crouch
Catherine Crowley
Anne Curran
Kathleen Dannunzio
Michele Darling
Druanne Davies
Elin Davis
Louise Demirjian
Peggy Denton
Ana Devera
Anne Dickerson
Gino Dimattia
Lisa Dio
April Doebert-Fischer
Joan Dostal
Nancy Doyle
Wendy Drake-Kline
Gerri Duran
Mary Echterling
Marianne Estrela
Cynthia Evetts
Mildred Ey Gittinger
Lee Ann Fallet
Amanda Farrell
Jean Farrell-Holtan
Sarah Field
Lorie Fike
Robin Finkelstein
Marcia Finlayson
Barbara Fleege
Erin Flynn
Doreen Fraits-Hunt
Mary Lou M. Fredette
Brenda Lee Frie
Rachel Galant
Frances Gallagher
Eileen Garza
Daniel Geller
Amy Gerney

Kathleen Gibbs
Azela Giese
Gordon Giles
Amy Glahn
Carolyn Glickstein
Betsey Goldberg
Kathleen Golisz
Serap Gray
Naomi Greenberg
Theta Grimaud
Carol Gryde
Stephanie Haeussler
Sari Hands
Caitlin Hanrahan
Lora Harris
Julia Harris
Martha Hartgraves
Theresa Heck
Christine Helfrich
Pamela Henry
Gayle Hersch
Erin Hoeksema
Kathy Hoffmann-Grotting
Holly Holland
Karen Holliman
Elise Holloway
Susan Holmes
Timothy Holmes
Esther Huecker
Susanna Ickes
Georgette Ireland
Jeanne Jackson
Lynn Jaffe
Antonieta Jauregui
Janet Jedlicka
Allison Jelenek
Robin Jones
Tara Joyce
Michael Justiss
Mary Beth Kadlec
Jule Kagan
Li Ann Kagawa
Lisa Kane-Green

Kathleen Kannenberg
Pamalyn Kearney
Deborah Keefe
Grace Kelso
Sharmeen Khan
Alice Kim
Rosalie King
Peter Kiongo
Catherine Klarer
Donna Klein
Kathy Kniepmann (faculty
advisor)
Kristie Koenig
Maria Kraemer
Sheama Krishnagiri
Emilie Lam
Betty Jean Lang
Elizabeth Lannigan
Robbyn Laufer
Natalie Leland-Wiatrowski
Kimberly Lenington
Gloria Levin
Jeffrey Loveland
Lisa Lowder
Rebecca Ludwig
Bettyanne MacCormac
Zoe Mailloux
Mitchell Martino
Michael Marzano
Mary Chris Mathews
Deane McCraith
Ann McDonald
Paula McNamara
Jennifer Mele
Amy Miller
Carol Mooney
Jennifer Moore
Mariann Elizabeth Moran
Mark Mrsa
Kellie Murphy
Patricia Nagaishi
Bonnie Nakasuji

Debra Oddis
Philip Ogunleye
Sandra Oleson
Carol Olson
Jane Olson
Janet Opila-Lehman
Jamie Orrange
Diane Parham
Lorraine Pedretti
Jean Pennucci
Misti Peppler
Denise Peralta
Monica Perlmutter
Kathleen Pettersen
Marcy Phillips
Hermine Plotnick
Janet Poole
Kathy Preissner
Tammy Price
Antje Price
Christine Raber
Laurel Radley
Cheryl Ratnoff
Gretchen Reeves
Jeanne Rehr
Barbara Rider
Patricia Robbins
Tirza Roda
Sandra Rogers
Linda Rooney
Denise Rotert
Mona Sage-Castleberry
Kathleen Saunders
Sarah Saven
Jennifer Scholtz
Mary Schulte
Theresa Schuster
Susan Schwartz
Jeannette Schwartz
Michelle Scott
Janice Seargent
Suryakumar Shah

Pamela Sheean
Fong Siu-Lai
Bobbie Smith
Karen Smith
Roberta Smith
Stacy-Jo Smith
Amy Smith
Diana Smith
Dana Smith
Teepa Snow
Carole Soricelli
Jeanne Sowers
Ronald Stone
Bethany Stroup
Yolanda Suarez-Balcazar
Judy Taft
Maureen Tagsip
Nilima Tanna
Joseph Troutd
Leonard Trujillo
Joan Tunningley
Andrea Tyszka
Jantje Van Der Molen
Suzanne Velez-Perez
Sarah Vlahovic
Susan Vollman-King
Sandra Wainman
Terri Weiner
Shirley Werth
Mary Margaret Windsor
Rose Wittersheim
Jennifer Womack
Christine Wright
Ashley Wright
Yuriko Yasuda
Linda Yee
Elizabeth Yerxa
Andrea Zakrajsek
Julie Zimmerman
Shirley Zurchaue