

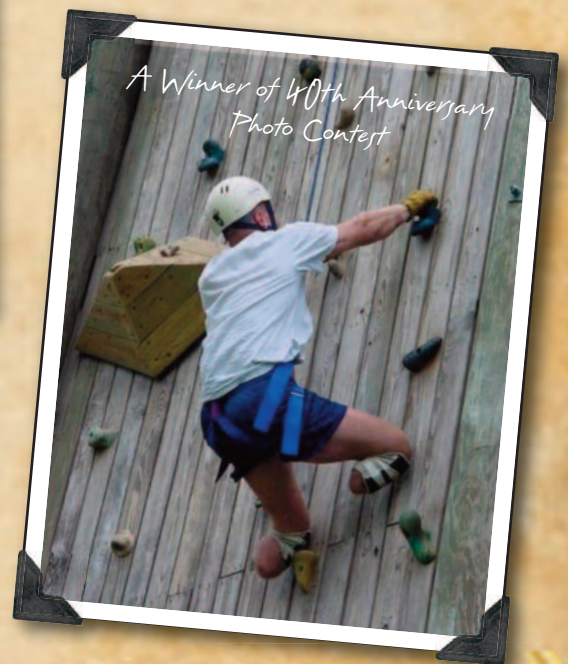
# Celebrating 50 Years

...OF ADVANCING THE SCIENCE OF  
OCCUPATIONAL THERAPY

**Report to Donors 2014**



*Our Signature  
Scientific Journal,  
first published 1981*



*Pi Theta Epsilon  
Founded 1958*



*Academy of Research  
Founded 1983*

# 1965-2015:

## Fifty Years of Advancing the



*AOTF's founders ...  
imagined the need and  
importance of having a  
scientific and charitable  
organization whose work  
would advance theory  
and research in  
occupational therapy.*

Dear Friends,

During this 50th anniversary year, it is an extraordinary privilege to serve the American Occupational Therapy Foundation and profession through my participation as board chair. AOTF's founders in 1965 were leaders of great vision. They imagined the need and importance of having a scientific and charitable organization whose work would advance theory and research in occupational therapy. They knew that disseminating information to support research would be important, and they realized that having credible evidence to support safe and effective occupational therapy practice would be essential. Clearly, they understood that Research Matters.

But could they have envisioned that fifty years later, respected scientists at research universities across the United States would be receiving generous AOTF grants each year to fund their occupational therapy intervention research? Could they have imagined that scores of deserving students would receive scholarships funded through AOTF endowments, created with generous contributions by individuals and organizations who believe in occupational therapy's unique value to health care?

Fifty years from now, the world will be quite a different place. It is easy to imagine that knowledge from research will dramatically advance both medicine and occupational therapy practice. Yet, despite such advances, the vital need for people to have engaging and meaningful lives will not change.

Another thing will not change. AOTF will continue to depend on generous donors to build its endowments and help fund its grant-making and scholarship activities. AOTF will continue to require committed volunteers to serve on its governing board and committees. These collective actions of philanthropy are what have made AOTF the great foundation it is today, and with your support, will make it even greater in the years to come. Thank you for your support over the past year, and for your continued loyalty and commitment to support the Foundation's mission to advance the science of occupational therapy to support people's full participation in meaningful life activities.

Sincerely,

A handwritten signature in cursive script that reads "Diana L. Ramsay".

Diana L. Ramsay  
Chair, Board of Directors



# Science of Occupational Therapy

## Numbers tell stories.

The sheer number of key programs, publications, scholarships and grants of AOTF's first half century are impossible to fully account here, but collectively they are indeed impressive. AOTF has sponsored numerous conferences on research, published a leading scientific journal for nearly 35 years, awarded over 1.3 million dollars in scholarships to nearly 1,500 students, and given millions of dollars of research grants to support university-based centers, doctoral research grants, pilot studies, and larger intervention grants to foster theory development and generate evidence to support occupational therapy practice.

Appreciating that committed people worthy of recognition are often behind great accomplishments, AOTF celebrates excellence through programs that honor scientists, students, and volunteer leaders. For example, the prestigious Academy of Research, started in 1983, has now recognized 57 extraordinary occupational therapy scientists. Thousands of students have been inducted into the national Pi Theta Epsilon Honor Society through chapters at over 100 colleges and universities. To help achieve its literary and research aims, AOTF maintains the world's largest collection of occupational therapy resources through its Wilma L. West Library operated in partnership with the American Occupational Therapy Association. Wilma West could never have imagined that an online database would open this collection to the world. In 2015, AOTF launches its Leaders & Legacies Society with over 140 outstanding volunteers whose belief in the profession has called them to contribute thousands of hours of personal time in the service of advancing the profession.

None of this would have been possible without the support of partner organizations such as the American Occupational Therapy Association and the National Board for Certification in Occupational Therapy as well as numerous corporate and individual sponsors and 21 state associations who generously created endowments to provide perpetual scholarship funding for promising occupational therapy students.

AOTF now looks ahead to the next half century, and is mindful of the ultimate purpose of its efforts: Assuring that the public has access to safe and effective occupational therapy services that are evidence-based and science-driven. With this in mind, expect continued emphasis by AOTF on its efforts to advance the science necessary to sustain a practice grounded in occupation and worthy of continued public support in the 21st century.



*Since its inception,  
**AOTF has...  
awarded  
over \$1.3 million  
in scholarships  
to nearly  
1,500 students,  
and given  
millions of dollars  
of research grants  
to support  
university-based  
centers,  
doctoral research  
grants,  
pilot studies,  
and larger  
intervention  
grants.***

## Research Matters.

# Intervention Research Grants – Funding the Future of Occupational Therapy

AOTF launched the Intervention Research Grant (IRG) Program in 2013 as part of its mission to *advance the science of occupational therapy to support people's full participation in meaningful life activities*. This grant program will lay the necessary groundwork for larger intervention studies and support the profession's Centennial Vision of occupational therapy as science-driven and evidence-based. The Intervention Research Grant program receives major funding from the National Board for Certification in Occupational Therapy (NBCOT), the American Occupational Therapy Association (AOTA), and the St. Catherine Challenge.

In the initial year of the IRG, the priority areas selected were autism spectrum disorders and health issues related to aging. In 2014, the funding priorities came from the AOTF/AOTA Occupational Therapy Research Agenda's intervention category. Priority populations included individuals with developmental disorders, physical impairments, cognitive impairments, mental disorders, chronic health conditions, and preventable secondary conditions. The objectives of the Intervention Research Grant program are to enhance occupational therapy's contributions to societal needs, fund innovative interventions to connect research-evidence-practice, cultivate interdisciplinary research teams, include underserved and diverse populations in research,

and mentor new investigators and researchers.

A Scientific Review Group (SRG) of experienced grant reviewers and an expert statistician reviews the grant applications and rates them using standard NIH grant criteria: Overall impact, significance, innovation,

approach, investigator qualifications, and research environment. AOTF funded five awards in FY 2014 and will fund eight awards in FY 2015 with a maximum award of \$50,000.

## We believe Research Matters.

### FY 2014 AWARDEES

**Erin Foster, OTD, MSCI, OTR/L**  
*Feasibility and Optimization of a Cognitive Intervention for Parkinson Disease*  
Washington University School of Medicine

**Sandra Magaña, PhD, MSW**  
*Promoting Participation among Latino Children with ASD*  
University of Illinois at Chicago

**Beth Pfeiffer, PhD, OTR/L, BCP**  
*Manualization of an Intervention to Improve Work Environments for Adults with ASD projects*  
Temple University

**Arlene Schmid, PhD, OTR**  
*Merging Yoga and group OT (MY-OT)*  
Colorado State University

**Mary Ellen Stoykov, PhD, MS, OTR/L**  
*Bilateral Priming for Upper Extremity Hemiparesis in Older Adults*  
Rush University Medical Center

### FY 2015 AWARDEES

**Winifred Dunn, PhD, OTR/L, FAOTA**  
*Feasibility of Telehealth Coaching for Rural Families of Children with Autism*  
University of Kansas Medical Center

**Simone Gill, PhD, OTR**  
*Use of Motor Learning Principles to Reduce Fall Risks After Surgical Weight Loss*  
Boston University

**Mary Khetani, ScD, OTR/L**  
*Feasibility Test of the PEM-Plus: An Innovative Intervention Planning Guide*  
Colorado State University

**Jessica Kramer, PhD, OTR/L**  
*An Environment Problem Solving Strategy for Parents of Youth with Disabilities*  
Boston University

**Elizabeth Larson, PhD, OTR**  
*5Minutes4Myself: Motivational Occupational Coaching & Mindfulness for Caregivers*  
University of Wisconsin–Madison

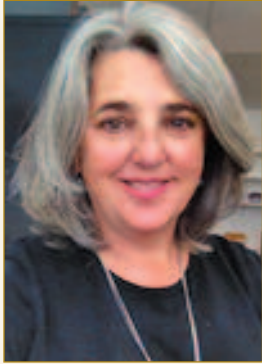
**Susan Magasi, PhD**  
*Negotiating the Healthcare System: A Peer-OT Lead Intervention*  
University of Illinois at Chicago

**Stacey Reynolds, PhD, OTR/L**  
*Effects of Deep Pressure on Arousal and Performance in Persons with Autism*  
Virginia Commonwealth University

**Roseann Schaaf, PhD, OTR/L, FAOTA**  
*Testing Outcomes of a Manualized OT Intervention for Children with Autism*  
Thomas Jefferson University

## AOTF Academy of Research 2014 Inductees

*The AOTF Academy of Research recognizes individuals who have made exemplary and distinguished contributions toward the science of occupational therapy.*



### **DEIRDRE ROSE DAWSON, PHD, OT REG (ONT)**

***University of Toronto, Toronto, Ontario, Canada***

Dr. Dawson is a senior scientist with the Rotman Research Institute at Baycrest in Toronto, an associate professor in the Department of Occupational Science and Occupational Therapy at the University of Toronto and a member of the Heart & Stroke Foundation of Ontario Centre for Stroke Recovery.

Dr. Dawson's research combines her training in rehabilitation science, epidemiology and neuropsychology in order to best understand how cognitive processes in healthy aging, stroke, and other acquired brain disorders impact people's abilities to be autonomous in community living and to develop effective interventions that promote optimal participation in everyday life. Her research is funded by the Canadian Institutes of Health Research, the Heart & Stroke Foundation Centre for Stroke Recovery, the Ontario Neurotrauma Foundation, and the Quebec Rehabilitation Research Network.



### **JOY HAMMEL, PHD, OTR/L, FAOTA**

***University of Illinois at Chicago, Chicago, Illinois***

Dr. Hammel is professor and Wade Meyer Endowed Chair of Occupational Therapy at the Departments of Occupational Therapy and Disability and Human Development, College of Applied Health Science, University of Illinois at Chicago. She also directs the Graduate Studies for the Occupational Therapy Doctorate and is a faculty member of both the Doctoral Program in Disability Studies and the Doctoral Program in Rehabilitation Sciences.

Dr. Hammel's research program is focused on participation disparities of people with disabilities, as well as in community-based participatory research related to community living and participation choice, control, and societal opportunity for people who are aging with disabilities. Dr. Hammel has received more than \$7 million in federal grant funding and has had continuous funding on 37 grants since 1988.



### **ELIZABETH R. SKIDMORE, PHD, OTR/L**

***University of Pittsburgh, Pittsburgh, Pennsylvania***

Dr. Skidmore is associate professor in the Departments of Occupational Therapy and Physical Medicine & Rehabilitation and a member of the graduate faculty of the School of Health and Rehabilitation Sciences at the University of Pittsburgh.

Dr. Skidmore's NIH-funded research program examines the influences of cognitive impairments and mood symptoms on activities of daily living outcomes, and interventions designed to ameliorate these influences, focusing in two areas: interventions designed to improve rehabilitation outcomes for individuals with cognitive impairments after acquired brain injury (stroke, traumatic brain injury), and activities of daily living disability among community-dwelling older adults with Mild Cognitive Impairment and Major Depression Disorder. Dr. Skidmore has received over \$2 million in funding.

## OTJR: Occupation, Participation and Health – A Forum for Vigorous Discourse

In 1981, in the very first page of the very first issue of *The Occupational Therapy Journal of Research (OTJR)*, Lela A. Llorens wrote that “The need for research in occupational therapy is based upon the need to know how occupation impacts the lives of clients as a result of treatment for restoration of function, habilitation or rehabilitation, and intervention for prevention of disability and maintenance of healthful function. The need for research in occupational therapy encompasses the need to discover and test the theories upon which professional practice is based.” She goes on to say that “*OTJR* will provide a forum for scholars to engage in vigorous discourse, to propose researchable theoretical issues, and to report completed theory based research.” In the next editorial, Wilma West added that



*OTJR* will also be a place for interdisciplinary and collaborative research deemed necessary for the growth of occupational therapy. Since then, *OTJR: Occupation, Participation and Health* (as it is now known) has published over 800 articles from over 2,500 authors. Under the new leadership of Editor in Chief Dr. Sherrilene Classen, and working with Sage Publications, a leading international publisher of academic books and journals, *OTJR* will continue to seek innovative ways to provide timely reporting of advances in theory and practice. This peer-reviewed journal is highly respected and is now indexed in the NIH’s MEDLINE/PubMed database as well as other leading indexes in the social, behavioral, and biomedical sciences.

## AOTF Scholarship Awards since 1965

INCLUDES STATE OT ASSOCIATION PARTNERS AND NAMED AND CORPORATE SCHOLARSHIP PARTNERS

TOTAL NUMBER OF SCHOLARSHIPS AWARDED **1,450**

**\$1,316,646** TOTAL AMOUNT OF MONEY GIVEN



# 2014 Scholarship Recipients

## PROFESSIONAL DEGREE IN OCCUPATIONAL THERAPY

### North Coast Medical Scholarship

Caryn Brandel  
Towson University  
Keith Koppenhoefer  
Touro College, New York

### Kappa Delta Phi Scholarship

Samantha Lavach,  
The Ohio State University  
Reena Shah  
Nova Southeastern University

### Willard & Spackman Scholarship

Katie Ehlers  
University of Wisconsin–Madison  
Rachel Gillespie  
University of New Mexico

### The National Board for Certification in Occupational Therapy Endowed Scholarship

Angela Roberts  
University of New Mexico  
Virginia Chu  
University of Illinois at Chicago  
*Doctorate in Occupational Therapy*  
Erica Frederick  
The University of Toledo  
*Doctorate in Occupational Therapy*  
Daniel Fichter  
University of the Sciences in Philadelphia

### Renee Achter Memorial Scholarship

Casey Fish  
Milligan College

### Naida Ackley Memorial Scholarship

Julia Brunson  
University of New Mexico

### Mary Fiorentino Memorial Scholarship

Erin Buckley  
University of Illinois at Chicago

### Frank Oppenheimer Memorial Scholarship

Amanda Crowley  
Springfield College

### Janice McGraw Memorial Scholarship

Allison Crouch  
Winston-Salem State University

### The Network for Lesbian, Gay, Bisexual and Transgender Concerns in Occupational Therapy Endowed Scholarship

Michelle Dunn  
Dominican College

### AOTA Assembly of the Student Delegates (ASD) Scholarship

Crista Bush  
University of Pittsburgh

### The Martha Kirkland Pi Theta Epsilon Endowed Scholarship

Emily Demmler  
Colorado State University  
Jennifer Bush  
Elizabethtown College

## ASSOCIATE'S DEGREE IN OCCUPATIONAL THERAPY

### Kappa Delta Phi Scholarship

Chelsea Kolarik  
Sacramento City College

### Carlotta Welles Scholarship

Conny Seay  
Pueblo Community College

## AOTF – STATE ASSOCIATION SCHOLARSHIPS

### The Florence Wood Scholarship of the Arkansas Occupational Therapy Association

Haley Harris  
University of Central Arkansas

### The Adelaide Ryerson Smith Memorial Endowed Scholarship of the Arizona Occupational Therapy Association

Shira James  
A.T. Still University of Health Sciences

### The Florida Occupational Therapy Association Scholarship Honoring Myra McDaniel

Christen Fechtel  
University of Florida

### The Kansas Occupational Therapy Association Endowed Scholarship

Andrea Webber  
Saint Louis University

### The Karen Jacobs Scholarship of the Massachusetts Occupational Therapy Association

*Associate's Degree in Occupational  
Therapy*

Melanie Glynn  
Quinsigamond Community College

### The Fred Sammons and Barbara Rider Endowed Scholarship of the Michigan Occupational Therapy Association

Erin Iacco  
Western Michigan University

### The Julia D. Sweeney/New Mexico Occupational Therapy Association Endowed Scholarship

Jennifer Hill  
University of New Mexico

### The New York State Occupational Therapy Association Endowed Scholarship

Marta Parys  
Quinnipiac University

*Associate's Degree in Occupational  
Therapy*

Katrina Nickerson  
Jamestown Community College

### The North Carolina Occupational Association Endowed Scholarship

Elizabeth Hart  
University of North Carolina at Chapel Hill  
Sara Hammond  
University of North Carolina at Chapel Hill

### Ruth Peterson Memorial Endowed Scholarship of the Kappa Chapter, Pi Theta Epsilon, University of North Dakota

Jamie Knudsvig  
University of North Dakota  
Taryn Wagner  
University of North Dakota

continued on p.8

2014 Scholarship Recipients continued

**The Oklahoma Occupational Therapy Association Endowed Scholarship**

Audrey Sublett  
University of Oklahoma Health Sciences Center

**The Occupational Therapy Association of Oregon Endowed Scholarship**

*Doctorate in Occupational Therapy*  
Aaron Proctor  
Pacific University

**The Chris Ebbers Endowed Scholarship of the South Carolina Occupational Therapy Association**

Danielle Lynch  
Medical University of South Carolina

**The Texas Occupational Therapy Association Endowed Scholarship**

Ana Antonetti  
Texas Woman's University

*Associate's Degree in Occupational Therapy*

Kristen Rubine  
Austin Community College

**The Utah Occupational Therapy Association Endowed Scholarship**

*Associate's Degree in Occupational Therapy*

Jessamyn Middaugh  
Salt Lake Community College

**The Fred Sammons Endowed Scholarship of the Virginia Occupational Therapy Association**

Sara Garrison  
Radford University

**The West Virginia Occupational Therapy Association Charlotte Prudich and Elizabeth B. Devereaux Endowed Scholarship**

Ashley Greer  
West Virginia University

**The Wisconsin Occupational Therapy Association Endowed Scholarship**

Anne Rego  
University of Wisconsin-Madison

## Award Winners

AOTF is proud of its 2014 award winners, each of whom exemplifies a commitment to occupational therapy research, leadership and education.

**AOTF A. Jean Ayres Award**

Dottie M. Ecker, MA, OTR/L, FAOTA  
La Canada Flintridge, California  
Susan H. Knox, PhD, OTR/L, FAOTA  
Hollywood, California

**AOTF Virginia Scardina Award of Excellence**

Deborah Whitcomb, PhD, MBA, MS, OTR/L  
Cincinnati Occupational Therapy Institute  
Cincinnati, Ohio

**AOTF Award for Community Volunteerism**

Sandy Hanebrink, OTR/L  
Touch the Future  
Anderson, South Carolina  
Alexander Lopez, JD, OT/L  
Touro College, Sayville, New York

**AOTF Mary J. Bridle First Research Award**

*Beta Delta Chapter of Pi Theta Epsilon*  
Nova Southeastern University  
Fort Lauderdale, Florida

**AOTF Meritorious Service Award**

Adam T. Drobot, PhD, Dallas, Texas

**AOTF Leadership Service Commendation**

Jane D. Acquaviva  
Raleigh, North Carolina  
Andrea R. Bilics, PhD, OTR/L, FAOTA  
Worcester State University  
Worcester, Massachusetts  
Nancy Richman, OTR, FAOTA  
Glantz/Richman Rehab Associates  
Highland Park, Illinois  
Jane Davis Rourk, OTR/L, BCP, FAOTA  
Durham, North Carolina  
Aaron Eakman, PhD, OTR/L  
Colorado State University  
Fort Collins, Colorado  
Kim Schoessow, OTD, OTR/L  
Frank Stein & Paul S. May Center for  
Low Vision Rehabilitation  
San Francisco, California  
Kari J. Tanta, PhD, OTR/L, FAOTA  
Valley Medical, Renton, Washington



## A New Constellation of Stars is Born: The AOTF Leaders & Legacies Society

The **Leaders & Legacies Society** seeks to identify, honor, and fully engage a cadre of occupational therapy professionals annually who have demonstrated their leadership abilities and skills through service in a variety of civic and professional organizations. This will create a broad community of established occupational therapy leaders who will support and promote the multifaceted mission of the Foundation through giving, mentoring, and volunteering for Foundation programs.

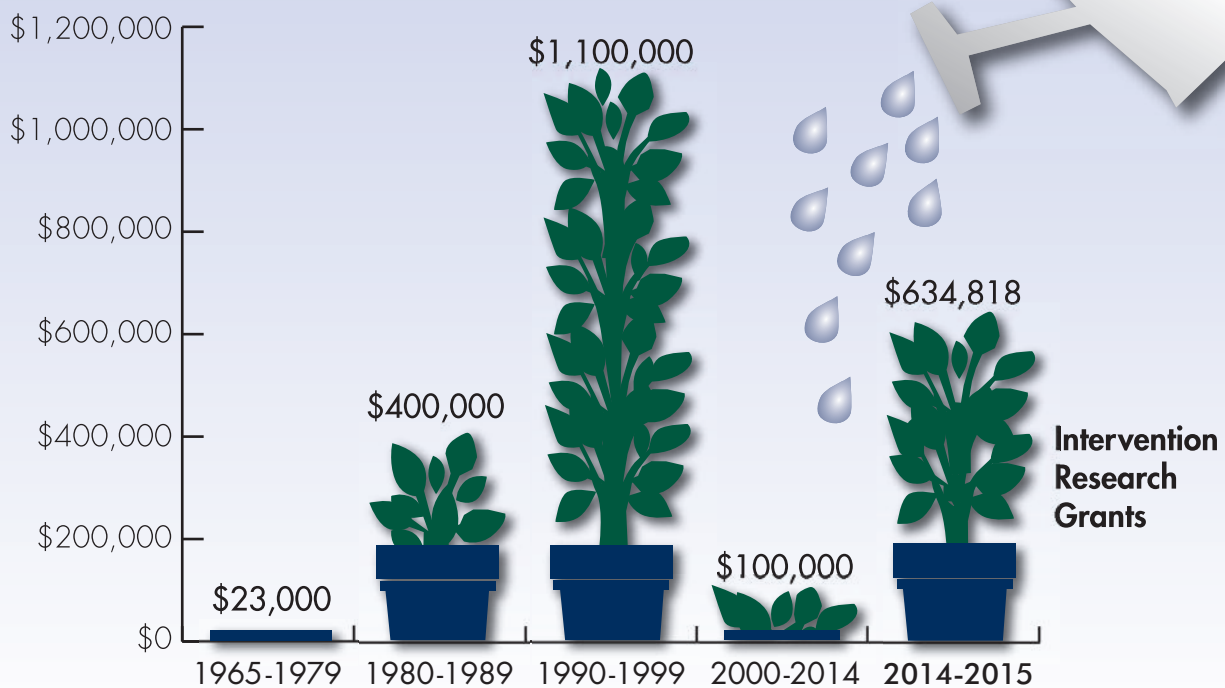
On April 17, 2015, AOTF will celebrate the founding members of the Leaders & Legacies Society during the AOTA Conference in Nashville. This dedicated

group of over 140 visionary occupational therapy volunteers will undertake projects of importance to the AOTF mission in the coming year. Planned projects include efforts related to documenting occupational therapy's history, advancing the AOTF scholarship program, and nominating prospective members.

The interim organizing leadership committee for the new society consists of Chair Ellen Kolodner and Vice Chair Ruth Schemm along with Teri Black, Christine Hischmann, Patricia Lavesser, Michael Pizzi, and Shirley Wells.

## Five Decades of Direct Grant Support

(WITH SUPPORT FROM AOTA AND OTHER DONORS)



# The St. Catherine Challenge Wows in Inaugural Year

The inaugural year of the St. Catherine Challenge saw eighteen occupational therapy programs accept the Alpha Delta (Pi Theta Epsilon chapter at St. Catherine University) challenge to raise money for AOTF research grants. These leading programs, now designated as the extraordinary eighteen, include: *St. Catherine University, A.T. Still University, Boston University, Colorado State University, Creighton University, Florida International University, The Ohio State University, Sacred Heart University, San José State University, Thomas Jefferson University, University of Findlay, University of Minnesota, University of North Dakota, University of St. Augustine, University*



*of Southern California, University of Wisconsin-LaCrosse, Virginia Commonwealth University, and Washington University in St. Louis. St Catherine University won the challenge and all together these schools raised more than twelve thousand dollars in only three months. The following schools have joined the challenge this year: Brenau University, College of St. Scholastica, Ithaca University, Rush University, Spalding University, University of Puget Sound, and The University of Toledo.*

AOTF thanks all students who understand:  
**Research Matters.**



## MAKE A GIFT MAKE A DIFFERENCE

Consider making AOTF one of your philanthropic priorities and support the future of occupational therapy.

Gifts to AOTF help us continue our mission of advancing the science of occupational therapy. Gifts can be made through our secure web site at [www.aotf.org](http://www.aotf.org).

The American Occupational Therapy Foundation has planned giving options that help you tailor your gift of cash or other assets to suit your circumstances. Large or small, your bequest will make a difference; they are truly investments in the profession's legacy. If you'd like to explore bequests to AOTF contact [aotf@aotf.org](mailto:aotf@aotf.org).

# Pi Theta Epsilon Continues to Grow and Support Excellence in Occupational Therapy



Pi Theta Epsilon (PTE), established in 1958, is the national honor society for occupational therapists. From its first chapter at the University of New Hampshire, Pi Theta Epsilon has evolved into a nationally-recognized organization dedicated to stimulating, recognizing, and rewarding educational systems that support excellence in scholarship, research, and critical thinking in occupational therapy.

PTE began its relationship with AOTF in 1988. A period of growth followed and today, the total number of chapters is 105. PTE members continue their mission of supporting

excellence by sponsoring scholarly and outreach occupational therapy activities at their respective universities and communities. Business meetings are held every year at the AOTA/NBCOT Student Conclave and in 2014, a PTE-sponsored poster session was also held. The President's Award, (given annually to chapters that organize and implement outstanding scholarly activities) was awarded to Duquesne University's Beta Theta chapter for their work in developing and implementing a journal club within their occupational therapy program.

## The Wilma L. West Library

(A JOINT PROJECT WITH AOTA)



## BOARD OF DIRECTORS

*As of October 1, 2014*

### **Executive Committee**

Diana L. Ramsay, Chair  
Langhorne, Pennsylvania

Wendy J. Coster, Vice Chair  
Boston, Massachusetts

Patricia Booth, Secretary  
Chicago, Illinois

Martha Kirkland, Treasurer  
Baltimore, Maryland

### **Directors**

M. Carolyn Baum  
St. Louis, Missouri

Mary Ellen Buning  
Louisville, Kentucky

Alfred "Chip" J. Chiplin, Jr.  
Washington, DC

Susan M. Fitzpatrick  
St. Louis, Missouri

Mary Foto  
Montecito, California

Emily Kringle  
Minneapolis, Minnesota

Kinsuk K. Maitra  
Miami, Florida

Jan Polgar  
London, Ontario, Canada

### **Non-Voting Members**

Virginia "Ginny" Stoffel  
AOTA President  
Milwaukee, Wisconsin

Amy J. Lamb  
AOTA Vice President  
Ypsilanti, Michigan

Charles H. Christiansen  
AOTF Chief Executive Officer  
Bethesda, Maryland

### **Honorary Life Members**

Donald Lang

Nancy V. Liefinck

Jane Davis Rourk

Fred Sammons



### **THE AOTF MISSION**

The mission of AOTF is to advance the science of occupational therapy to support people's full participation in meaningful life activities.

### **THE AOTF VISION**

We envision a vibrant science that builds knowledge to support effective, evidence-based occupational therapy.

### **AOTF'S STRATEGIC GOALS**

#### **RESEARCH**

To support initiatives that build research capacity and advance knowledge related to occupation, health, and well-being.

#### **SUSTAINABILITY**

To develop the financial and human resources necessary to pursue the vision and mission of the Foundation.

#### **AWARENESS**

To increase public and professional recognition of AOTF and its purposes and activities.

# Securing the Future

The American Occupational Therapy Foundation expresses sincere appreciation for the support provided by so many generous friends during fiscal year 2014 (October 1, 2013-September 30, 2014), including the American Occupational Therapy Association, whose members contribute to the Foundation through their annual AOTA membership dues.

## \$10,000 and above

National Board for Certification in Occupational Therapy  
North Coast Medical, Inc.  
Kathlyn Reed  
Sharon G Ryan

## \$5,000-\$9,999

Donald F Lang  
Kappa Delta Phi Sorority

## \$2,500-\$4,999

Patricia Booth  
Mindy A Hecker  
Martha and JR Kirkland  
New Mexico OT Association  
Oklahoma OT Association  
Nancy Prendergast  
Sand Hill Global Advisors  
St Catherine University students

## \$1,000-\$2,499

ASCOTA University of North Dakota  
Julie Bass  
M Carolyn Baum  
Dorothy Omori Bergeron  
Bette Bonder  
Jack Chris Bradberry  
Charles Christiansen  
Ellen S Cohn  
Cynthia F Epstein  
Mary Elizabeth Foto

Betty Hasselkus  
Kansas OT Association  
Carmela Matthews  
MGH Institute of Health Professions  
Oregon OT Association  
Jane and Henderson Rourk  
Barbara Boyt Schell  
Nancy Vespar Snyder  
University of Minnesota students  
Washington University in St Louis

## \$500-\$999

B Joan Bellman  
Ann Borreson  
Kristine L Haertl  
Eric James  
Marcia Kielhofner  
Virgil Mathiowetz  
Diana L Ramsay  
Retirement Research Foundation  
Jamilie Segara  
Virginia C Stoffel  
University of Wisconsin - La Crosse students  
Washington University in St Louis students  
West Virginia OT Association

Katherine Aileen Lawson  
Linder's Greenhouses, Inc  
Amy Lee Lundblad  
Kathleen M Matuska  
Carole C Pauw  
Heidi McHugh Pendleton  
Helen Yooko Pierce  
Monica Robinson  
Sisters IHM  
Sarah Snyder  
Frederick P Somers  
USA SOTA  
Catherine Trombly Latham  
Virginia Commonwealth University students  
Ruth Ann and Tom Watkins  
Deborah A Whitcomb

## \$100-\$249

AT Still University students  
Beatriz C Abreu  
Marian Arbesman  
Ann Moody Ashe  
Rebecca Austill-Clausen  
Florence R Barna  
Marlene Marie Basiago  
John J Bazyk  
Jeanine Beasley  
Lucretia Ann Berg  
Fredlyn S Berger  
Michele Berro  
Andrea M Bilics  
Mary Binderman  
Shirley R Blabey  
Roxie Mona Black  
Robert C Blinksilver  
Deborah J Bolding  
Boston University students  
Margaret Bresko  
Diane Vargas Briggs  
Deborah Brown

Buffalo Wild Wings, Minneapolis  
Anita Bundy  
Mary Ellen Buning  
Janice Burke  
Catherine Faith Candler  
Karen Carrey  
Sarah A Chapin  
Christine C Chen  
Barbara Jane Cheney  
Florence Arcuri Clark  
Gerry Conti  
Shaun P Conway  
Wendy Coster  
Jeffrey L Crabtree  
Mary Elizabeth Craig-Oatley  
Elizabeth Blesedell Crepeau  
Patricia Crist  
Mary Andree Darnall  
Leslie Davidson  
Donald and Harriett Davidson  
Patricia Lynn Davies  
Ana Nina De Vera  
Ana Kanapi Devera  
Cathy Dolhi  
Carolyn Ruth Dorfman  
Joan Verona Dostal  
Winifred Dunn  
Cheryl Lanae Ecker  
Norma Kaplow Eagles  
Melanie T Ellekson  
Esther Misrahi Elting  
Erika Elizabeth Erich  
Judy Ericksen  
Charlotte E Exner  
Judith Falconer  
Bonnie Lynn Fellows  
Susan B Fine  
Thomas Fisher

Rita Patricia Fleming-Castaldy  
Linda Lou Florey  
Erin Flynn  
Lynn F Foster  
Rachel Galant  
Gamma Theta - Maryville U PTE Chapter  
Susan Lipton Garber  
Amy Gerney  
Virginia G Gessert  
Lynn Gitlow  
Coralie H Glantz  
Carolyn Stenzler Glickstein  
Patricia Andrea Gmitter  
Julie Kortum Groves  
Mary M K Hampton  
Carole Ann Hays  
Linda Heilman  
Alexis Henry  
Elizabeth S Herberger  
Irene Louise Herden  
Debi Hinerfeld  
Jim Hinojosa  
Agnes Haruko Hirai  
Margo B Holm  
A Joy Huss  
Shirley J Jackson  
Lauren Jackson  
Dr & Mrs Robert Jaffe  
Lynn Elin Jaffe  
Margaret Jolly  
Robin A Jones  
Pamaly J Kearney  
Stephen B Kern  
Nancy Kidulski  
Ellen Kolodner  
Wendy Krupnick  
Donna Kulakowski  
Mary Catherine Kustermann  
Emilie Lam

Amy Lamb  
Carol Lancaster  
Susan Lasley  
Sandra Jacobson Lerner  
Dorothy M Lesch  
Deborah Lieberman  
Ronna Linroth  
Lela Augustine Llorens  
Diane M Long  
Lynn Ellen Losada  
Zoe Mailloux  
Ethel Lee Mandelbaum  
Tina Ann Mankey  
Kellianne Kristian Martin  
Christine C Marzo  
Kristen June Mastrangelo  
Laura Matsumoto  
Andrea Joerding May  
Valnere Underhill Mclean  
Marie M Mcnamara  
Michelle Meneley  
Heather Rae Meredith  
Stephanie Meyer  
Rosalie J Miller  
Sheri Montgomery  
Li Ann Sayuri Nakada  
Bonnie J Nakasuji  
Ruth Patterson  
Jill Flippo Peterson  
Jackalyn K Pettit  
Shawn Phipps  
Hermine D Plotnick  
Susan Jane Price  
Cordelia H Puttkammer  
Thomas Quinn  
TZiPi Radonsky  
Yvonne M Randall  
Gretchen Dahl Reeves  
Lynne Richard  
Joan C Rogers

Leslie Roundtree	Sonia Zimmerman	Druanne Davies	Suzanne Holm	James Lee Mills	DeAnne Marie
Jacquelyn K Ryan	Maxine Zinder	Lavern Marie Davis	Beverly Postman	Mariann Elizabeth	Schmunk
Sacred Heart University	<b>\$50-\$99</b>	Janis L Davis	Horowitz	Moran	Abby Schuller
students	Rebecca Aldrich	Care DeLeeuw	Valerie Howells	Kouli E Nalpantidis	Janie B Scott
Fred Sammons	Katie C Alexander	Johanne Desrosiers	Sharee Huus	Michael A Nardone	Jocelyn Heather
Rebecca Ann Sanders	Mary M Alena	Cynthia Dodds	Muhammed N Ibrahim	Phyllis Morgan Nayak	Seamans
Ruth Levine Schemm	Lori T Andersen	Paula Lynn Dorschied	Susanna M Ickes	Ann Hamilton Nolen	Janice Lisbeth Seargent
Gretchen Marie	Michal S Atkins	Cecily Dotson	Kari Christine Inda	Kimberly Gear Obst	Gloria A Segal
Schmalz	Karla Ausderau	Wendy W Drake-Kline	Georgette R Ireland	Robyn Y Ogawa	Ann Lee Settles
Judith Schroeder	Grant Autrey	Aaron M Eakman	Karen Jacobs	Philip A Ogunleye	Suryakumar Shah
Schroeders Farm	Joan Marie Avallone	Mary Ellen East	Anne Birge James	Melissa Oliver	Rekha Shastri
Market	Charlene Avery	Alisa Ofsevit Eilenberg	Phyllis Ashwell Jennings	Doreen M Olson	Pamela Sheean
Mary Ann Schwartz	Julie Baltisberger	Beth A Ekelman-Ranke	Caryn Reichlin Johnson	Jane Ellen Olson	Barbara Silberschein-
Xylpha Whitley	Mary F Baxter	Shirley E Esenther	Mark V Johnston	Christine M Olwell	Herman
Schwehm	Marjory Ann Becker-	Mary Margaret Evert	Keavy Jones	Linda L Orr	Linda Lee Silver
Julie W Shaperman	Lewin	Victoria Fagerlee	Tara Coughlin Joyce	Rena Oswald-	Joan Elizabeth
Darlene Shaw	Suzanne E Bennethum	Marcia Finlayson	Mary Beth Kadlec	Anderson	Simmons
Chi-Kwan Agnes Shea	Amber McChesney	Gail Fisher	Jennifer M Kaldenberg	Carey Otterstedt	Karen Costello Smith
Mary P Shotwell	Billingsley	Sharon R Flinn	Virginia H Kane	Xingkui Pan	Olga Solomon
Carol A Siebert	Lori Lee Bjerke	Lora Kay Foust	Foust Kelley	L Diane Parham	Jeanne L Sowers
Roger O Smith	Erna Blanche	Jen-Eve Frace	Elizabeth Ann Kelso	Margaret Parker	Stephanie L Spangler
Victoria Smith	Ellen Hassenfeld Block	Turquessa P Francis	Jessica Kersey	Susan Y Peabody	Elinor Anne Spencer
Monica Snipes Berry	Margaret C Blodgett	Elizabeth Francis-	Christyna Kiesel	Jean C Pennucci	Susan L Spitzer
Dawn Albarado	Leslie Brady	Connolly	Alice Hatsue Kim	Susan Kay Peters	Ruby Christine
Sonnier	Mary Atlee Brandt	Mary Lou M Fredette	Joyce Jane King	Elizabeth Pfeiffer	Stephens
Susan Scanlan Spoeri	Glenda J Brawley	Brenda Lee Frie	Rosalie M King	Valerie E Plummer	Ronald G Stone
Susan A Stallings-	Deborah Brownell	David Funtanilla	Robin Ivy Klein	Sally E Poole	M Claire Caillet
Sahler	Juanita Ann Bruns	Mary Gabriel	Susan Hirsch Knox	Shellee Leong Poon	Stonich
Erica Beth Stern	Mary Ellen Bunning	Barrie Ganch Galvin	Kathleen Knutson	Katherine Post	L Randy and Laura
Jan Elizabeth Stube	Brandy Bush	Eileen R Garza	lisa Koo	Susan Powell	Strickland
Marbea Tiernan	Pamela Talero Cabrejo	Norman Gittinger	Emily Kringle	Antje Price	Minnie M Tang
Tammara	Regina Michael	Mildred Gittinger	M Valoree Lalime	Christine Lou Raber	LouieJean Taylor
Juliann Thomas	Campbell	Jennifer S Glover	Debbie Lamb	Laurel Cargill Radley	M Bryan Terry
Thomas Jefferson	Jane D Case-Smith	Judy Golf	Belkis Landa-Gonzalez	Susan B Rapsis	Courtney Britt Tesch
University students	Michael Patrick	Lisa Renee Gonzalez	Elizabeth Griffin	Cheryl Finkel Ratnoff	Texas OT Association
Linda Tickle-Degnen	Cassidy	Cynthia Grover	Lannigan	Lisa J Read	Sharon F Thompson
Pamela Toto	Michele Geballa Catlin	Goodman	Kenneth Oscar Larson	Nancy Z Richman	Kim Townsend
Patricia Burks Trossman	Jacquelyn Linn	Cynthia L Goodwin	Vista Le	Patricia B Robbins	Joseph Trout
Univ of Findlay students	Chamberlin	Catherine Yanega	Susan Marie Leonard	Mary Melissa Robinson	Jacqueline Turk
University of North	Cordelia Chan	Gordon	Kathryn E Levit	Sandra L Rogers	Mary Ann Turner
Dakota students	Kimberly R Charette	Susan Graves	Christine A Linkie	Susanne Smith Roley	Susan Marlene
Margarita Vileno-Sosa	Ruby Ka-Yee Cheng	Karen Linn Greenberg-	Lauren Lofy	Barbara Winthrop	Vollman-King
Mary Wagner	Connie Marie Chesser	Schroeder	Kathryn M Loukas	Rose	Joyce A Wandel
Donald Walkovich	Josephine Cohen	Theta Grimaud	Jeffrey D Loveland	Marilyn Rosee	Meredith Wells
Shelley Wallock	Lorraine S Cohn	Kathleen R Griner	Rebecca Luckie	Charlotte Royeen	Holly Wertel
Carroll E Walls	Marilyn B Cole	Patricia Ann Griswold	Marge Rose Luthman	Donna Rubin	Shirley Laia Werth
Sarah Wetmore	Colorado State	Lou Ann Griswold	M Jeanne Madigan	Elvira Arzaga Rubio	Heidi Rouleau
Shirley Lewis Wheatley	University students	Carol Joan Gryde	Mahesh Manghani	Ann Michal Ruderman	Whitehair
Martha W Wilcockson	Leora Ellen Comis	Mary Collins Guenzel	Kristin Gureasko Masci	Elizabeth Russel	Heidi Wills
Jane W Willis	Ann T Comiskey	William Harris	Anthony Maximo	Debra Ann Rybski	Mary-Margaret B
Wayne Lamar	Shannon Elizabeth	Penny Bell Helfrich	Heather Ann McBride	Karen Sames	Windsor
Winistorfer	Condon	Gayle Hersch	Anna Clare McDermott	Linda Samuel	Sandra Mae Winter
Timothy Wolf	Caren F Cornelius	Sarah Herfelder	Ann Elizabeth	San Jose State	Nicole Wittrock
Vansen Wong	Mary Louise Craver	Nathan B Herz	McDonald	University students	Nancy Baker Wolk
Marnie J Wortham	Jean A Croll Ewer	Anderson Hicks	Marjorie Gene Rae	Kathleen Rita Saunders	Jo Wryals
William Wrightsman	Ruth M Crouthamel	Erin Lynn Hoeksema	Mckenzie	Michelle M Saverann	Elizabeth June Yerxa
Connie Wu	Linda S Curry	Krisite Sue Hoffman-	Paula McNamara	Jean D Scherer	Xiaoyan Zhang
Ruth Zemke	Michele Darling	McIntyre	Patricia Aline Miller	Brian Schilling	Joanne Zimmerman
Alison Hazel Zilioli		Karen A Holliman			

# 2014 Financial Highlights

Revenues and expenses incurred in supporting our profession through scholarships, research support and publications, development and recognition of leadership, education and maintenance of the largest collection of occupational therapy resources in the country. The AOTF is a 501(c)(3) organization, Federal Tax I.D. # 136189382.

In 2014, the Foundation incurred expenses in the following programmatic categories:

<b>PROGRAM EXPENSES</b>	<b>2014</b>
Research	\$542,229
Education	\$351,511
<b>Total Program Services</b>	<b>\$893,740</b>
<b>SUPPORT SERVICES</b>	
General and administration	\$276,466
Marketing and development	\$246,334
<b>Total Support Services</b>	<b>\$522,800</b>
<b>Total Expenses</b>	<b>\$1,416,540</b>

## STATEMENT OF FINANCIAL POSITION SEPTEMBER 30, 2014

<b>ASSETS</b>	<b>FY2014</b>
Cash and Cash Equivalents	\$72,800
Inventory	\$61
Prepaid Expenses and Other Assets	\$13,082
Interest Receivable	\$25,861
Contributions Receivable, Net Current	\$1,500
Due from AOTA	\$55,760
Investments	\$23,426,009
Beneficial Interest in Remainder and Perpetual Trusts	\$2,306,769
Cash Surrender Value of Life Insurance, Net	\$6,679
Property and Equipment, Net	\$32,402
<b>Total Assets</b>	<b>\$25,966,184</b>
<b>LIABILITIES AND NET ASSETS</b>	
Accounts Payable and Accrued Expenses	\$116,541
Liability for Future Interest in Pooled Income Fund	\$1,492
Capital Lease Obligation Total	\$17,606
<b>Total Liabilities</b>	<b>\$140,402</b>
<b>NET ASSETS</b>	
Unrestricted:	
Undesignated	\$17,615,074
Board-designated Quasi-endowment Funds	\$456,876
Total Unrestricted Net Assets	\$18,071,950
Temporarily Restricted	\$657,652
Permanently Restricted	\$7,096,180
<b>Total Net Assets</b>	<b>\$25,825,782</b>
<b>Total LIABILITIES and NET ASSETS</b>	<b>\$25,966,184</b>



*1965*



*1980*



*50th Anniversary Logo*

THE AMERICAN OCCUPATIONAL THERAPY FOUNDATION  
4720 MONTGOMERY LANE, BETHESDA, MD 20814

(240) 292-1079 • (240) 396-6188 FAX

[aotf@aotf.org](mailto:aotf@aotf.org)

[WWW.AOTF.ORG](http://WWW.AOTF.ORG)

[www.facebook.com/AmericanOccupationalTherapyFoundation](http://www.facebook.com/AmericanOccupationalTherapyFoundation)